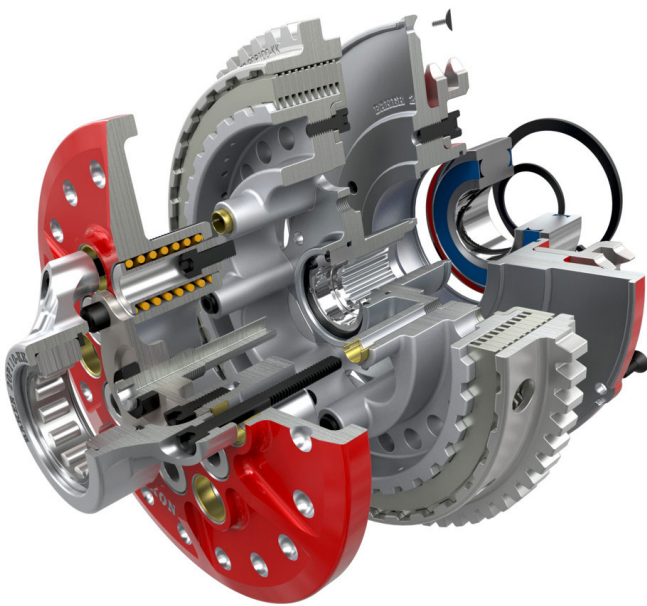




PROVIDING CAD SUPPORT TO YOUR IDEA



**INNOVATION
IN
MECHANIZATION**

**Mechanical Design Service Provider
&
CMS IntelliCAD Authorized Reseller**

WHO WE ARE

HEXSPUR DESIGNS is an outsourcing service provider expertise in the field of engineering design and manufacturing of special purpose machines with highly skilled and experienced manpower.

The organization was established by Mr. Krunal S. Mistry (Founder & Director) in the year 2012. Serving a range of customers worldwide helped us to emerge as one of the most reliable and innovation driven engineering design support service provider in the country.

OUR VISION

Improvise the reputations, effectiveness and productivity of little and medium organizations across the world through the arrangement of strong, incredible, cost-effective, practical and present-day promoting support benefits in a manner which acquires them nearby acknowledgement however with worldwide presence.

OUR MISSION

Providing workplace where our representatives can meet their latent capacity and flourish in an environment of perfection.

We keep a predominant degree of trustworthiness in connections with colleagues and partners.

Appreciating our made progress and conducting our business as model corporate residents.



OUR DESIGN SERVICES

- 2D Manufacturing Drawing & 3D Modeling of single or multiple parts with assembly.
- Prepare 3D Model & 2D Drawing by Measuring components.
- Creating Exploded Isometric Drawing of Assembly with Bill Of Material.
- Structure Design, Analysis & Fabrication Drawing.
- Design & Development of Entire Machine.
- Fixture Design for Robotic / Manual Welding, Machining Process & Assembly.
- Sheet Metal Design, Modeling & Cutting Layout of Sheet for Laser & Water Jet.
- Pressure Equipment Design (As per Design Code) including Fabrication Drawing.
- Piping & Routing Design including Modeling & Isometric Drawing.
- Design Updated Machine from Obsolete Design / Machine by Reverse Engineering.
- Develop Conceptual Design According to Client Requirement / Instruction.
- Working Animation of Machine & Motion Analysis.
- Prepare Presentation of Machine.
- Create Realistic Photo Copy of Machine (Render Image) on the basis of Virtual Model.
- Develop Part Number, Assembly Number & Drawing Number Generating Chart which one helpful in ERP systems.
- Mold Design, Die Design (Casting, Punching & Roll Forming).Injection Molding Die Design.
- Static, Dynamic & Thermal Analysis of Machine.
- Vibration Analysis of Machine.
- Motion & Flow Simulation.
- CFD Analysis.
- Design Calculation of Machines.



OUR S.P.M. DESIGN & DEVELOPMENT SERVICES

- Machines Related to Paper Industries.
- Machines Related to Food Industries.
- Machines Related to Plastic Industries.
- Machines Related to Pharma Industries.
- Machines Related to Automobile Industries.
- Robotic Welding / Machining Operation Related Fixture.
- Machines Related to Material Handling Industries.
- Machines Related to Packaging Industries.

Authorized Licensed User

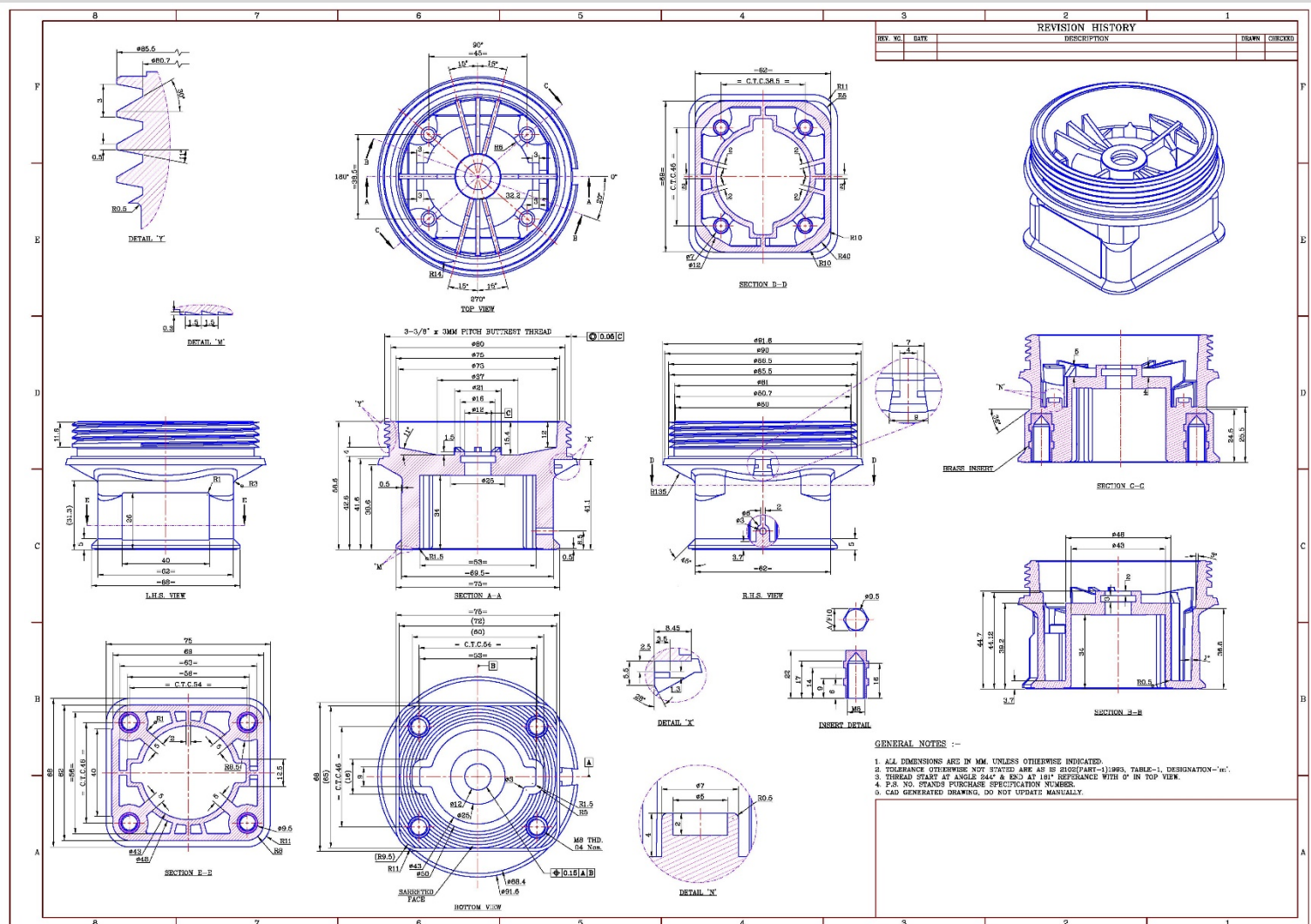


Authorized Reseller & Training Center

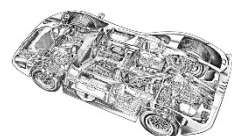
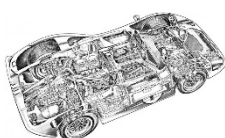


2D DRAFTING & 3D MODELING PROJECTS

In the accompanying ventures, we prepared computerized virtual 3D model and manufacturing drawings along with their assembly drawings with bill of material on the basis of self created actual drawing or real item.

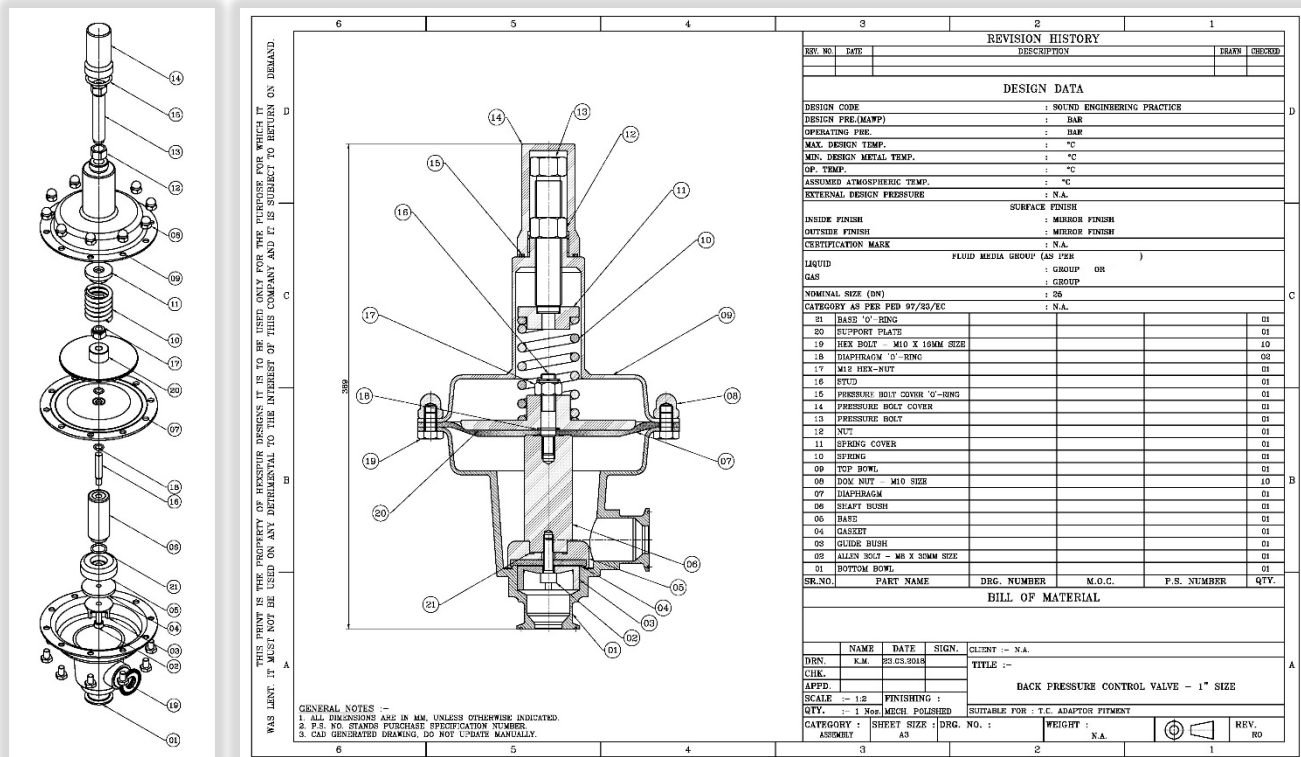


Pneumatic Actuator Base

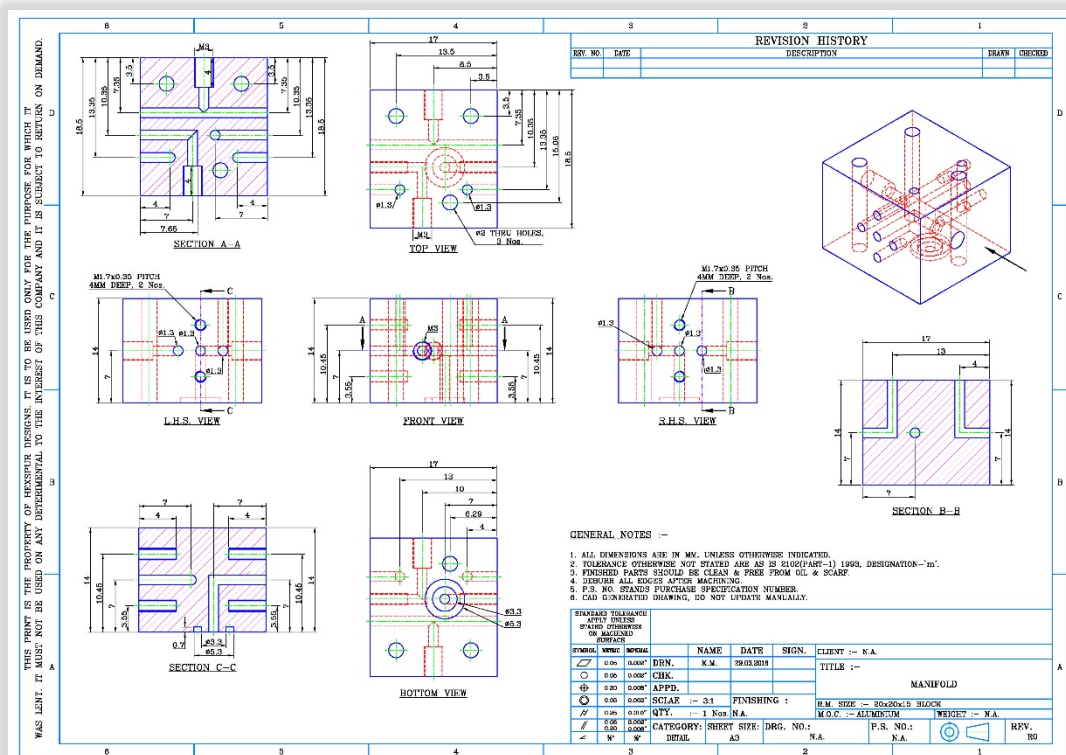


HEXSPUR DESIGNS

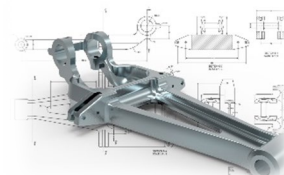
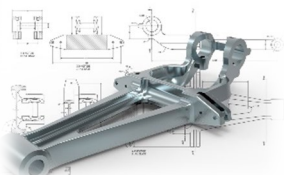
PROVIDING CAD SUPPORT TO YOUR IDEA

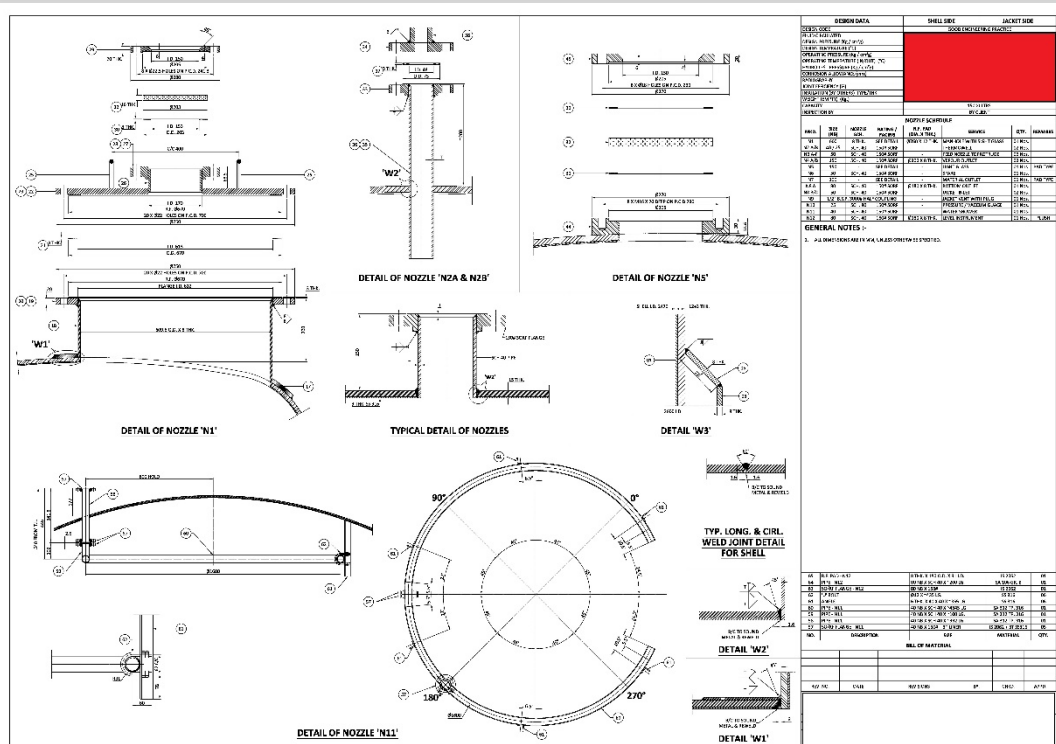
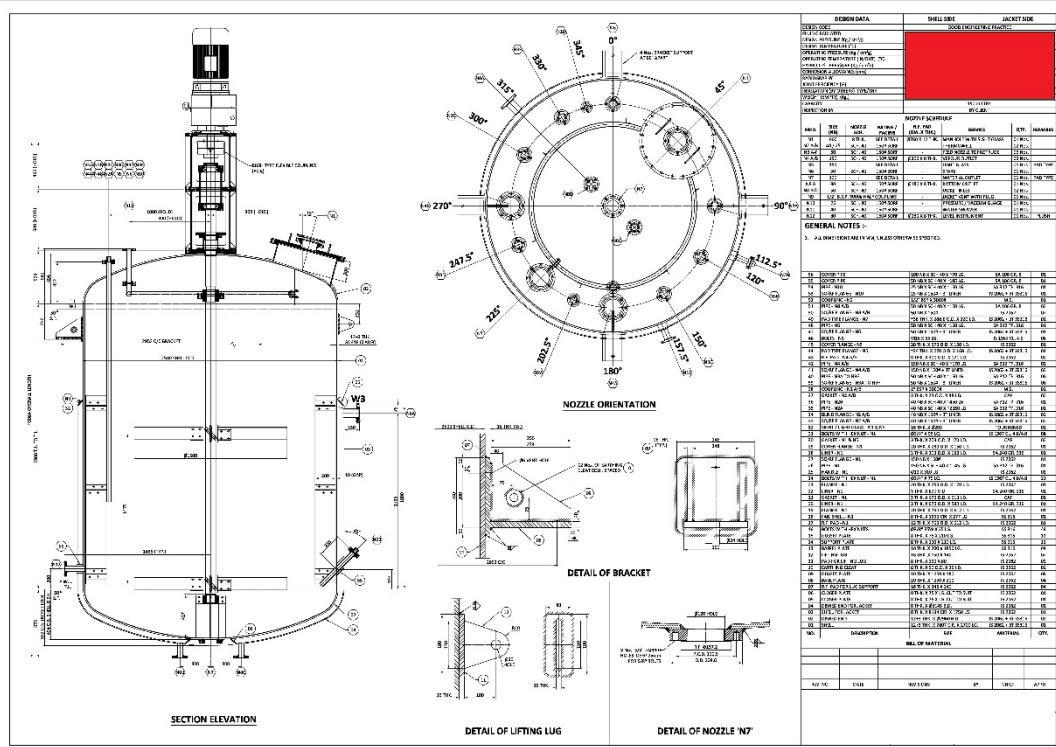


Back Pressure Control Valve Assembly

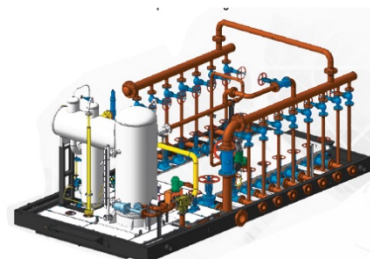
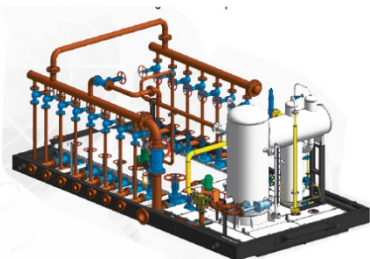


Pneumatic Manifold

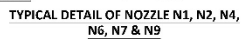




Pressure Vessel (General Assembly & Detail)



PROVIDING CAD SUPPORT TO YOUR IDEA



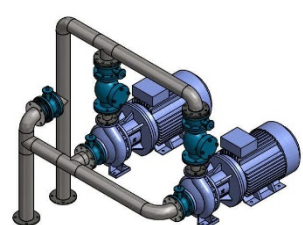
GENERAL NOTES :-

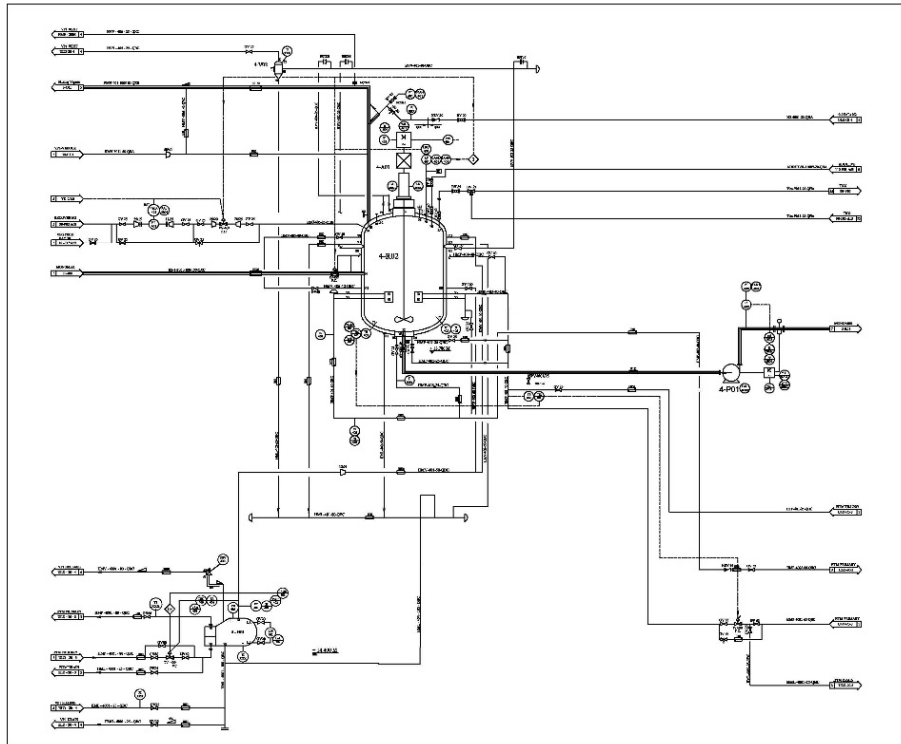
- © 2006 The Authors
Journal compilation © 2006 Blackwell Publishing Ltd

BILL OF MATERIAL				
------------------	--	--	--	--

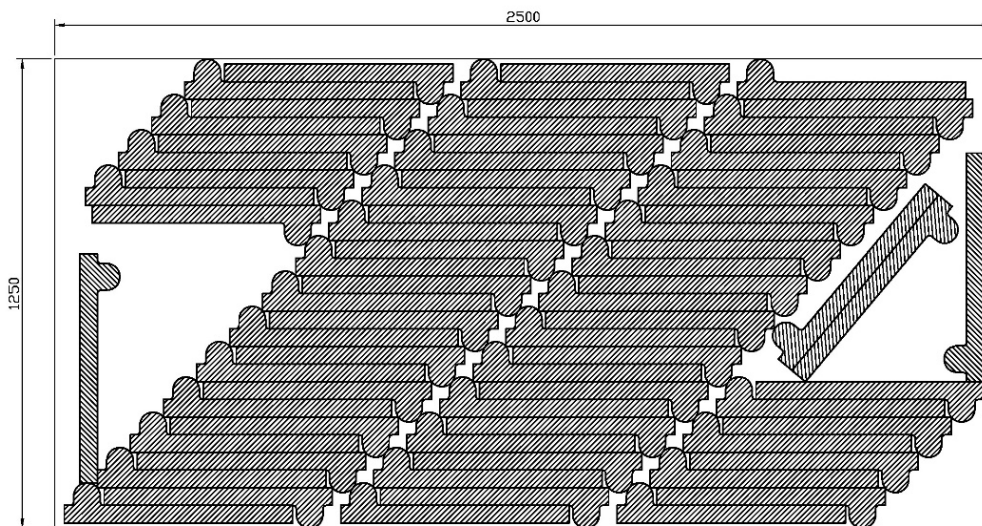


Pressure Vessel Design (As per ASME Code)



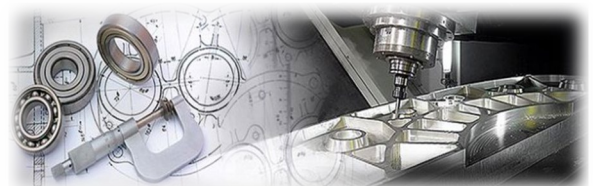


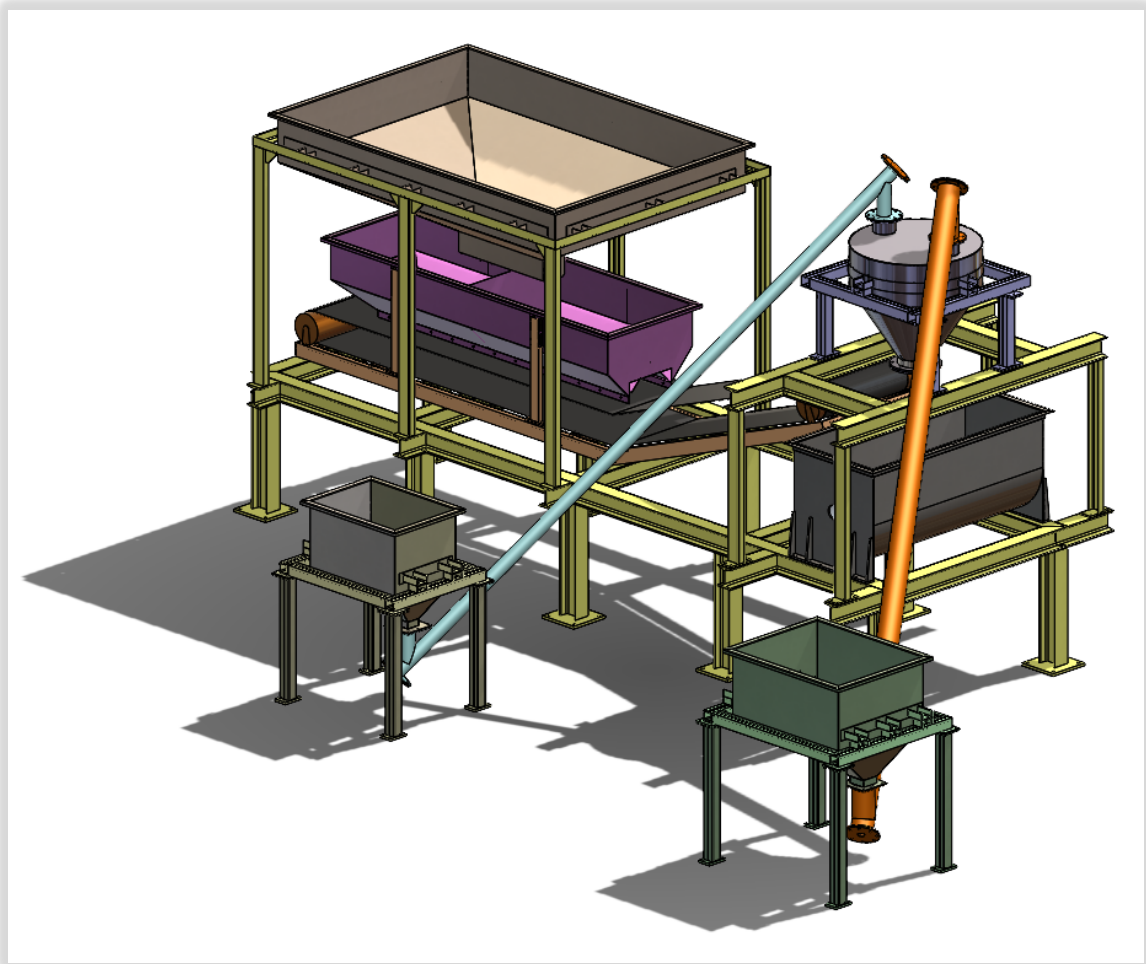
P&ID of Plant



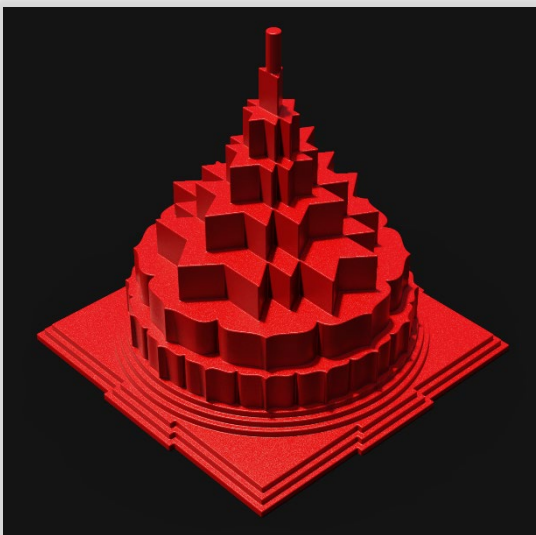
72 Nos. (Small)
 Comon Cut = 22,439mm (73.62')
 Total Cut = 1,00,034.64mm (328.2')
 Net Cut = 77,595.64mm (254.6')

Water Jet Cutting Layout

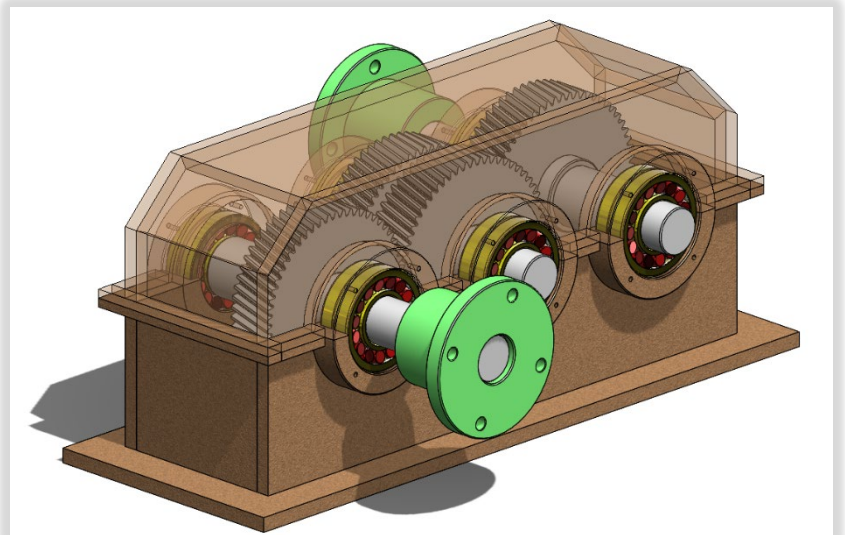




Concrete Mixing Plant



Shree Yantra



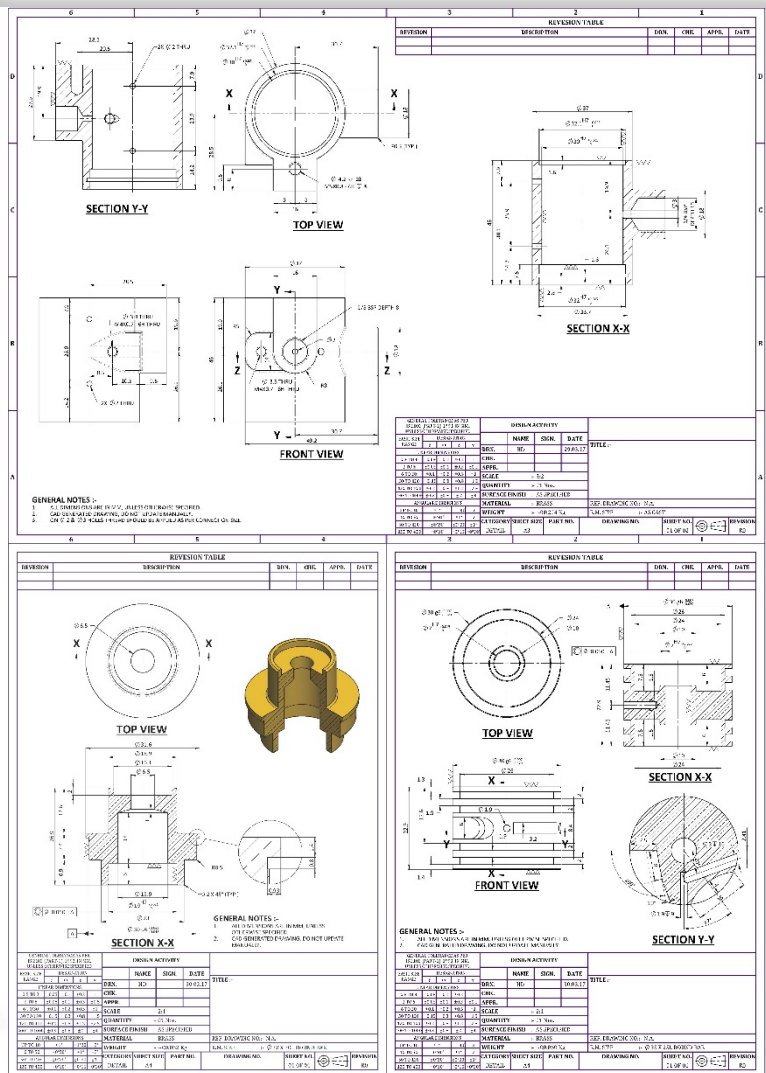
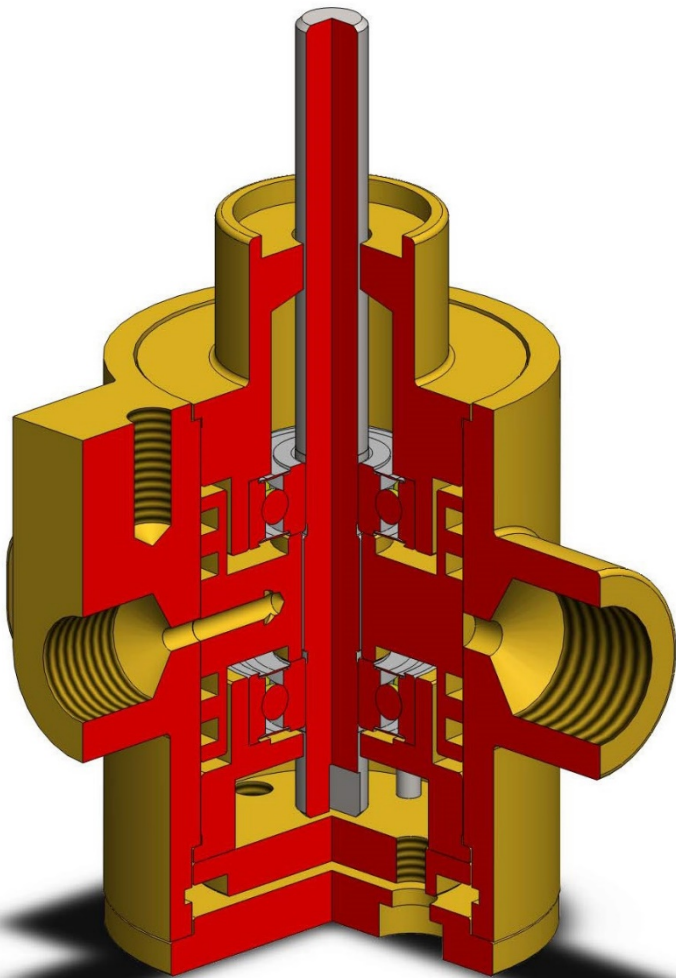
Helical Gear Box



REVERSE ENGINEERING PROJECTS

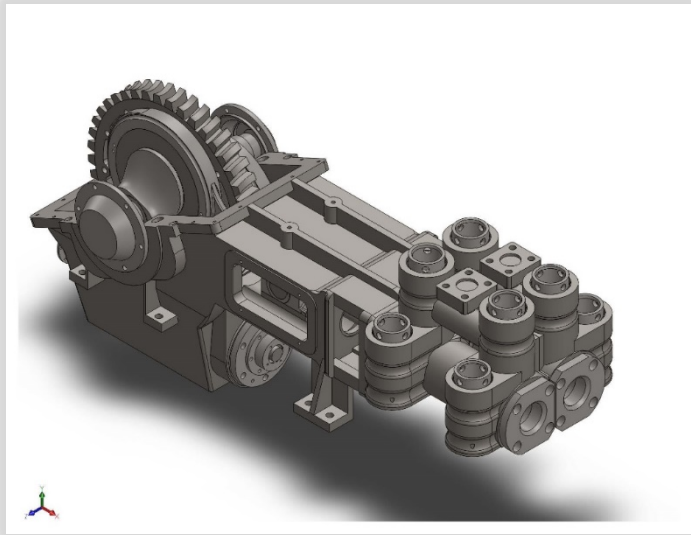
In the accompanying ventures, we prepared computerized manufacturing drawings along with their assembly by measuring every component of the machine physically.

Additionally, make changes in the original design in a cost effective manner according to client requirement.

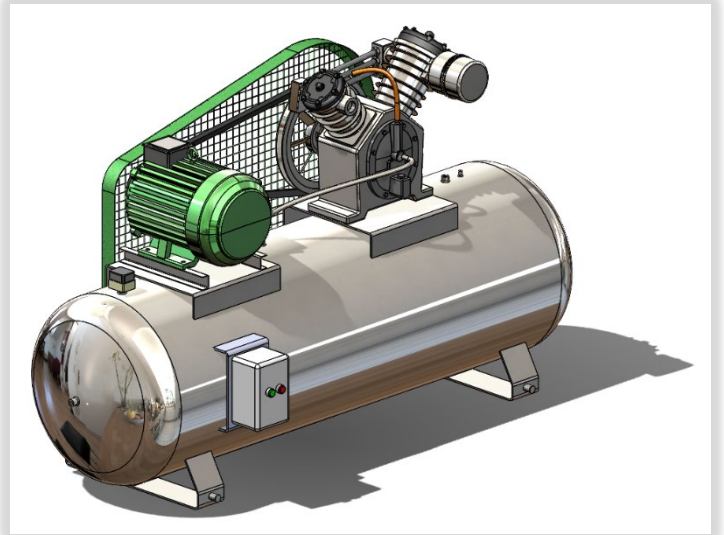


Air Pressure Valve

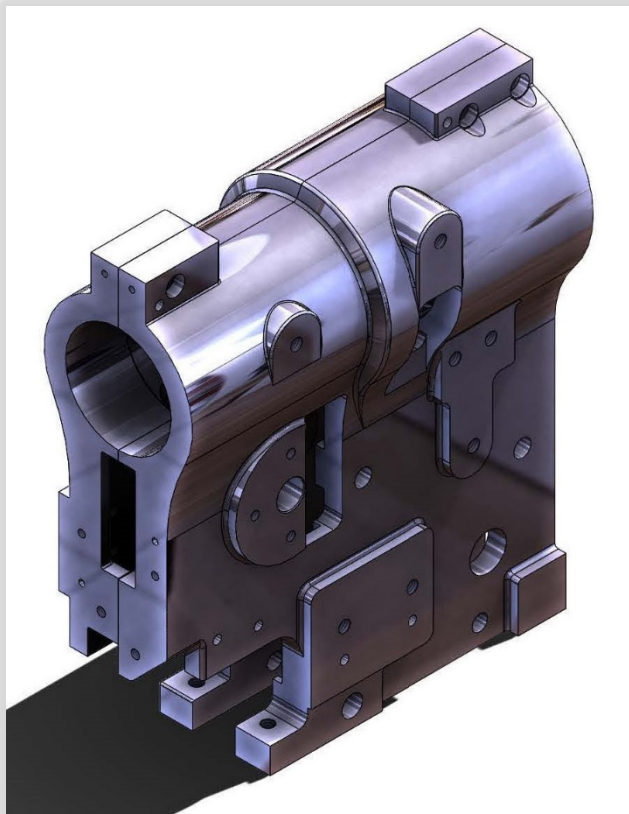




Reciprocating Pump



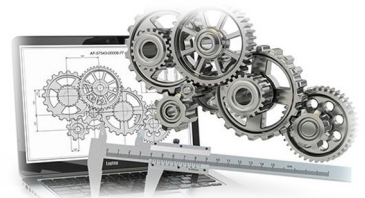
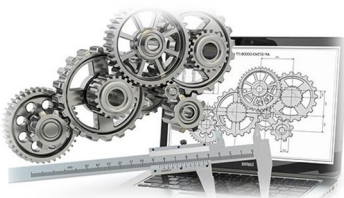
5HP Air Compressor

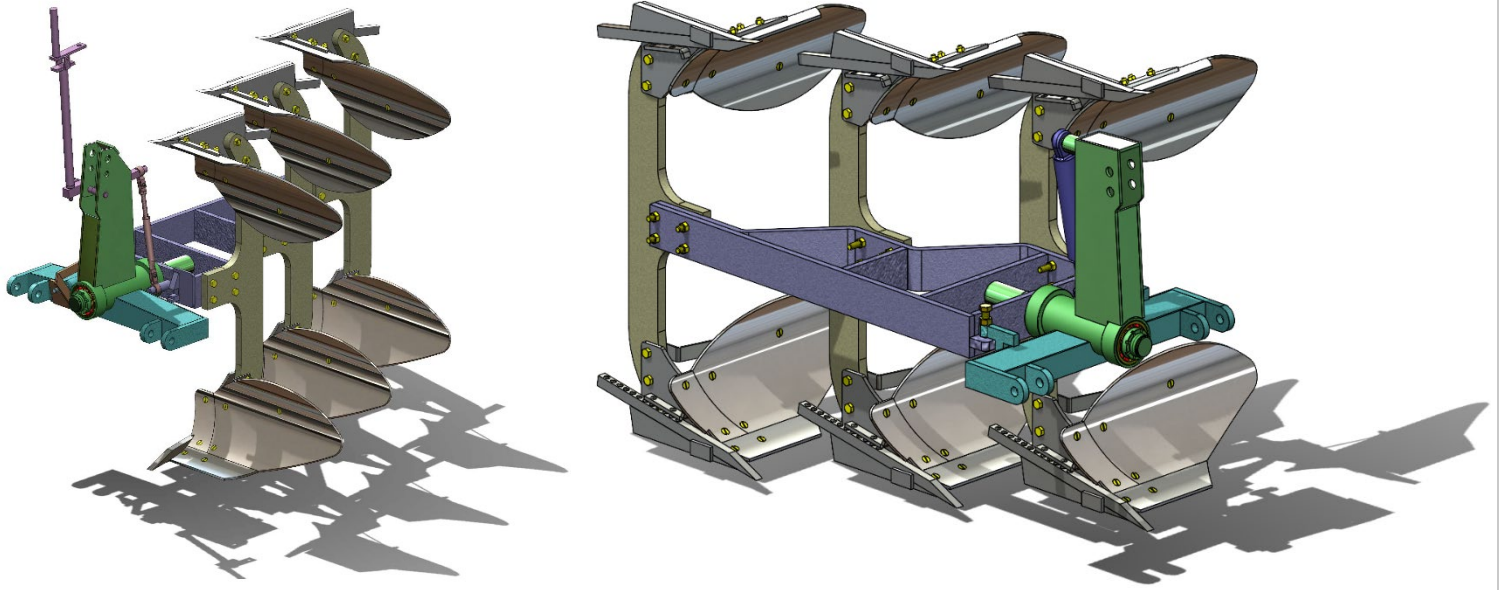


Cam Shaft Housing

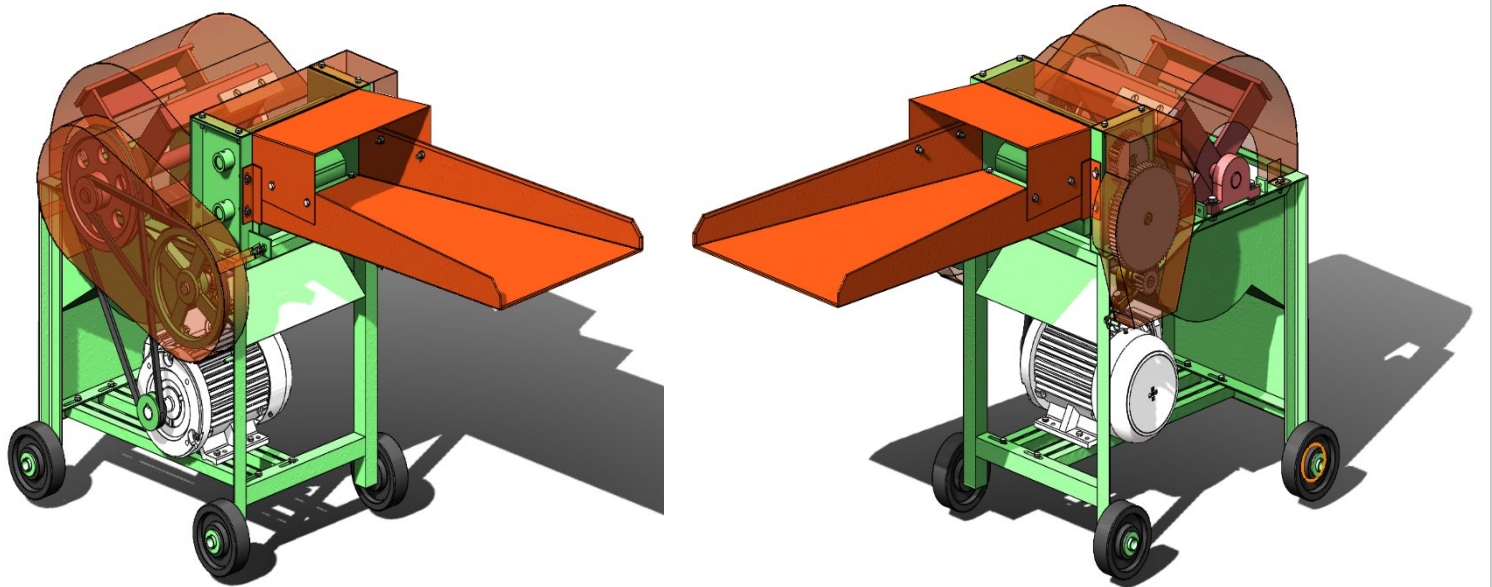


Cam Shaft Cover



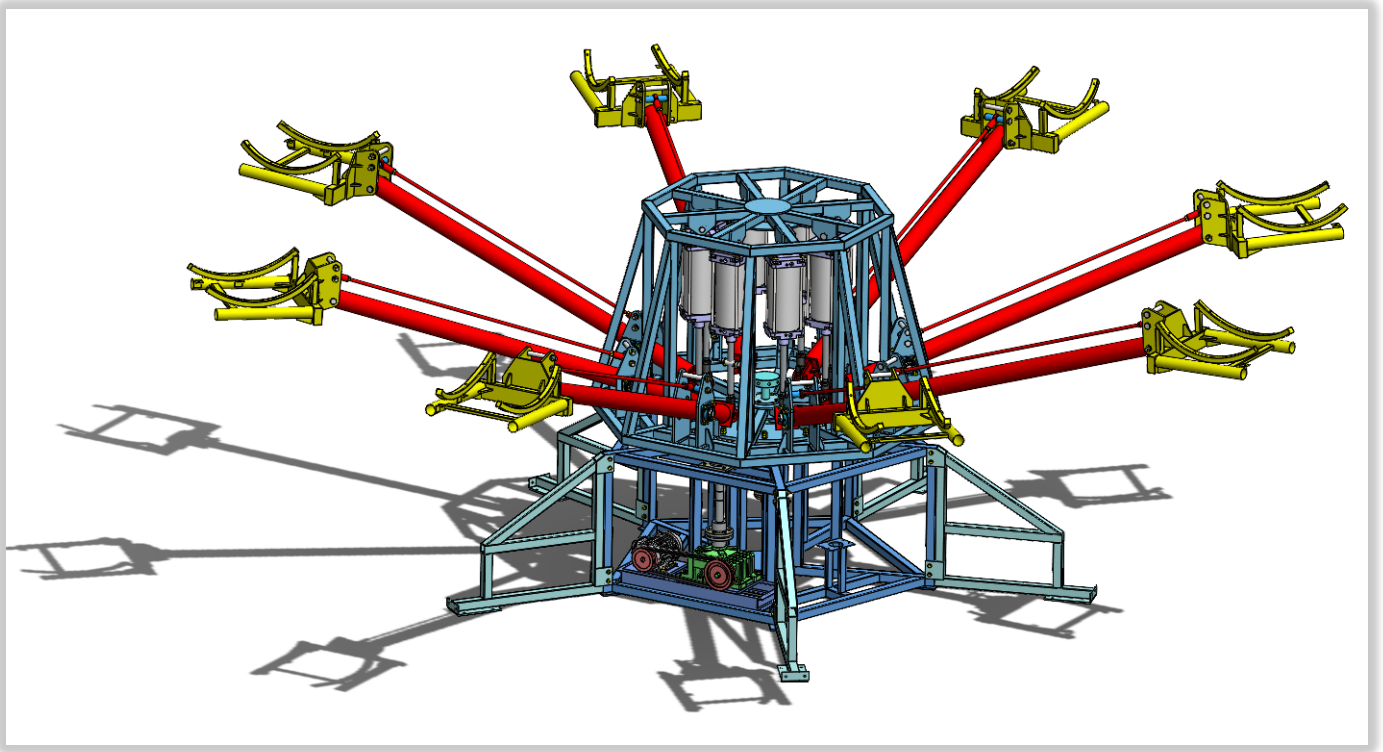


3 Bottom Manual and Hydraulic Reversible M.B. Plough

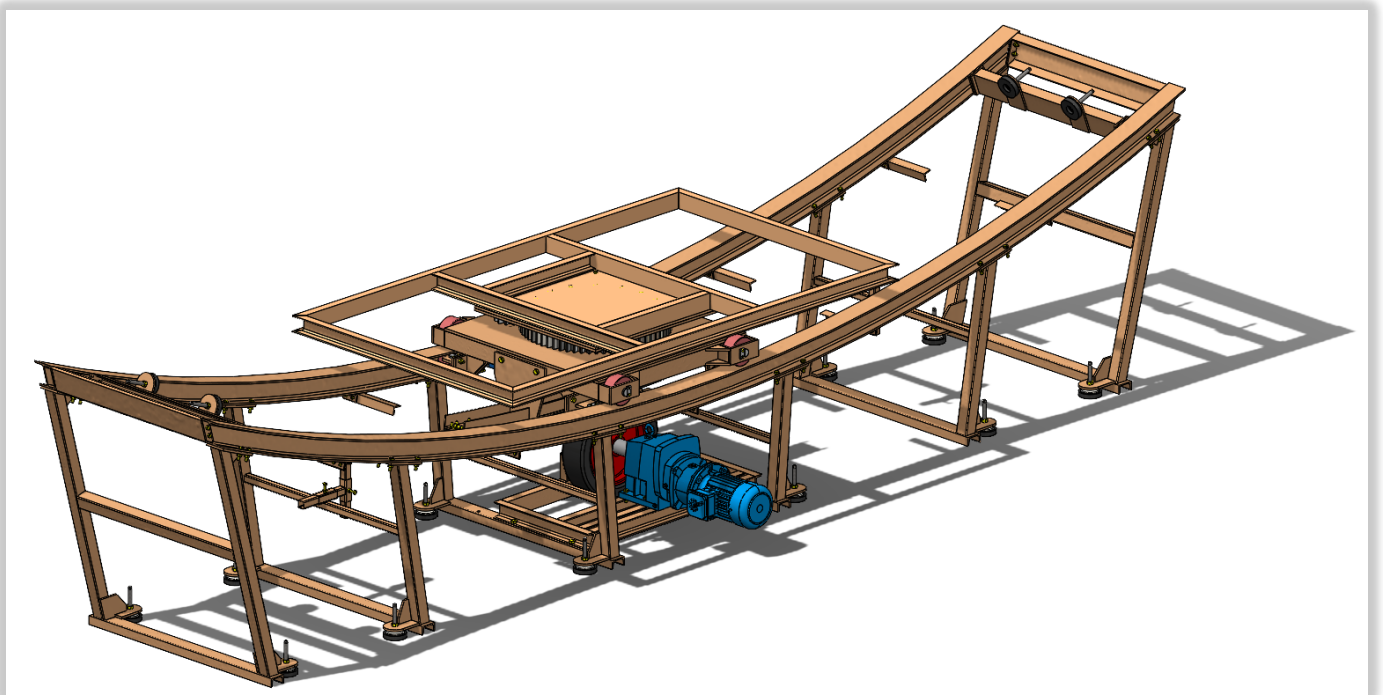


Chaff Cutter



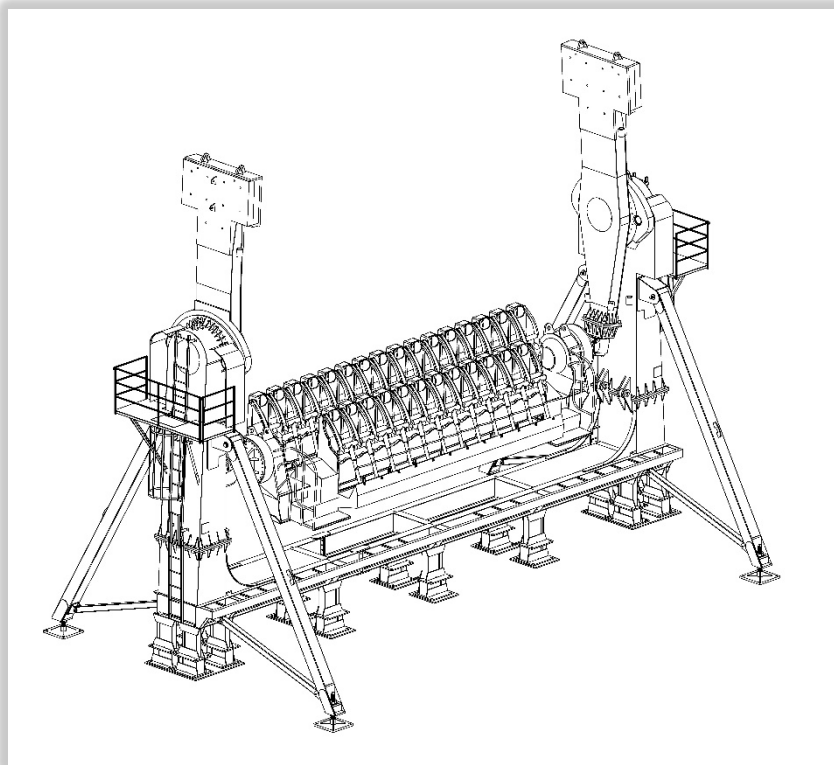


Amusement Park Ride : Mini Appu

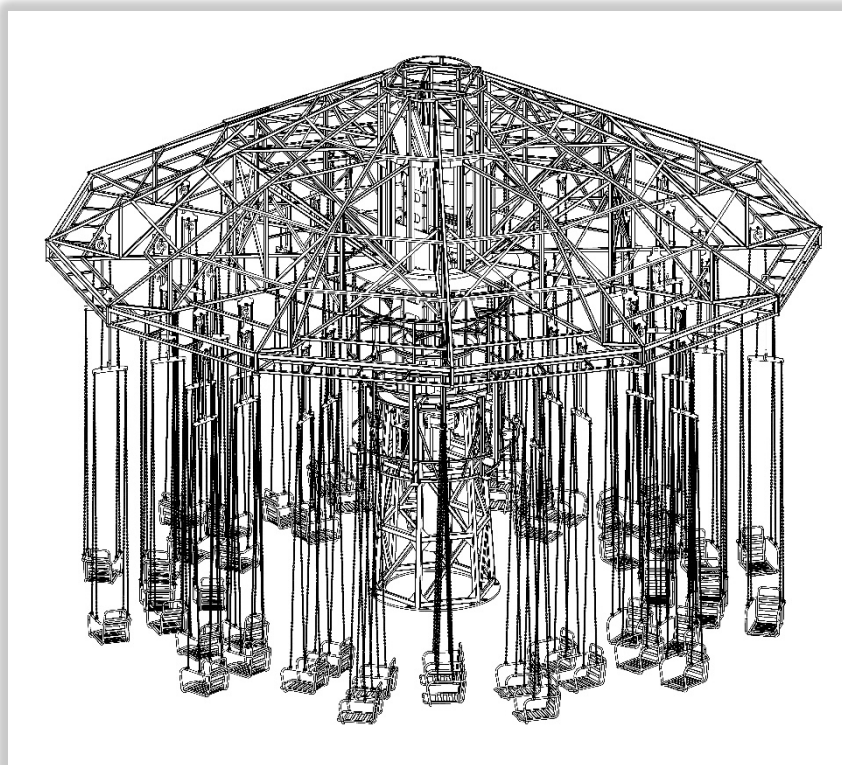


Amusement Park Ride : Sports Car



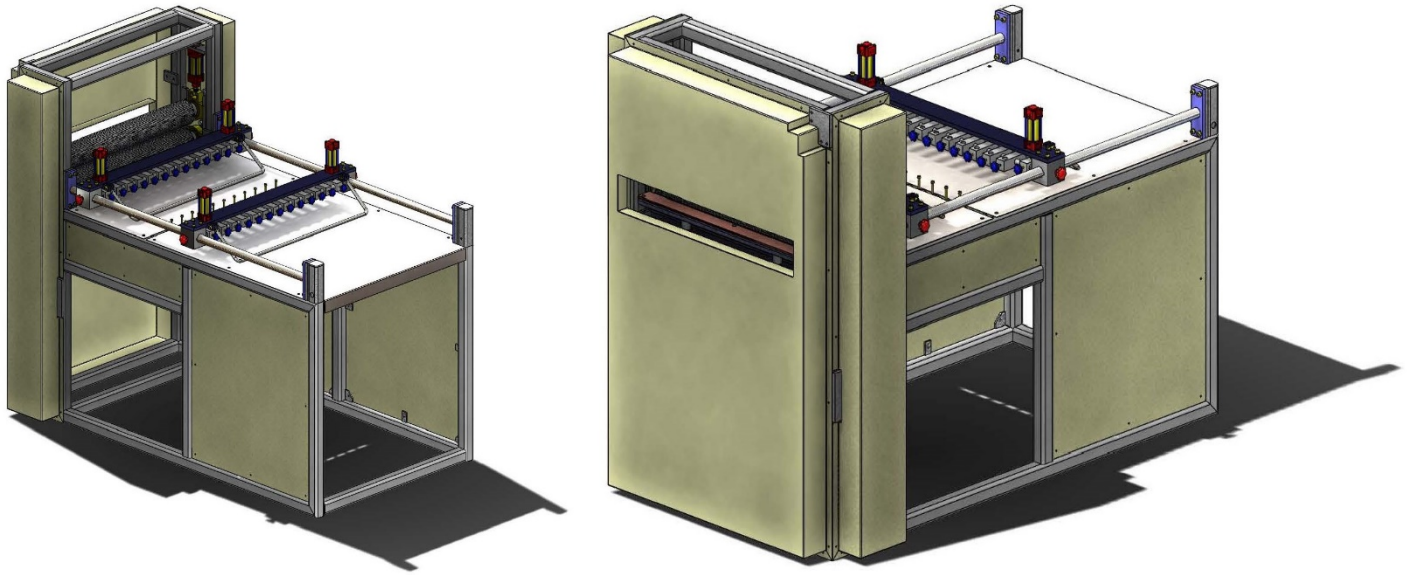


Amusement Park Ride : Imperator



Amusement Park Ride : Flying Chair

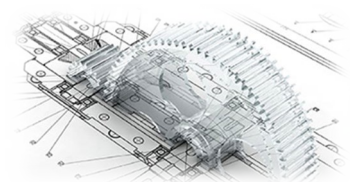
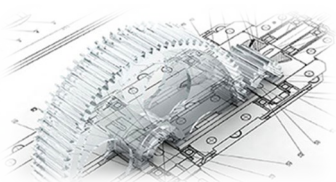




Bag Cutting Machine

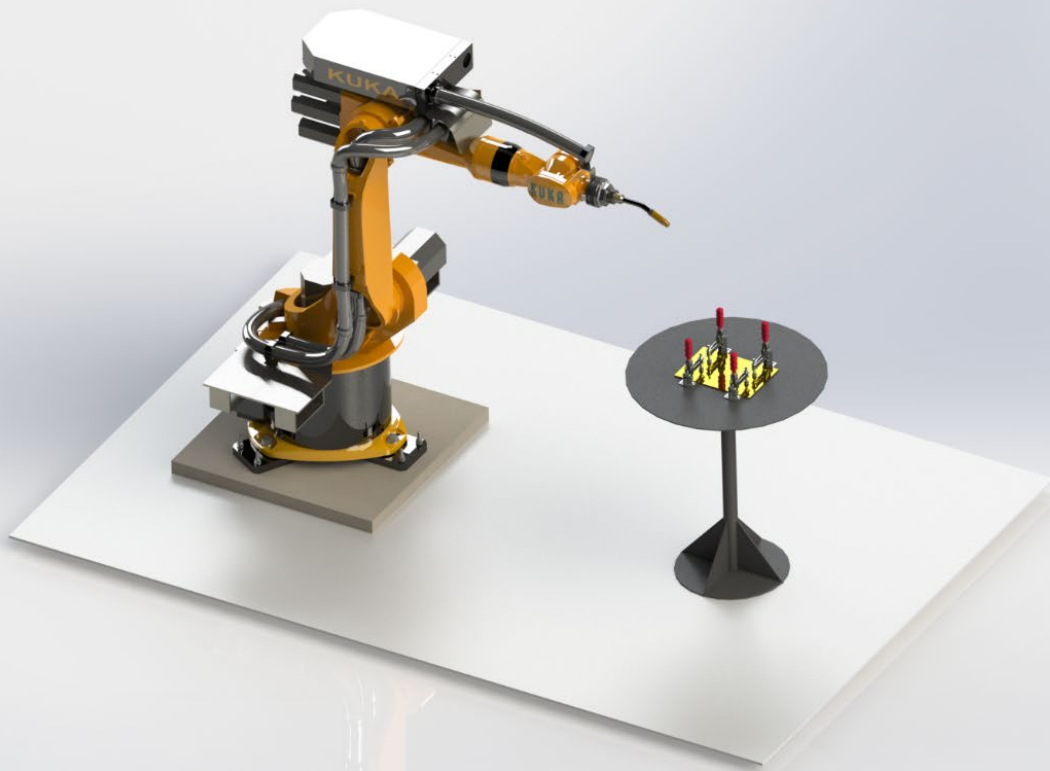


Other Single Components

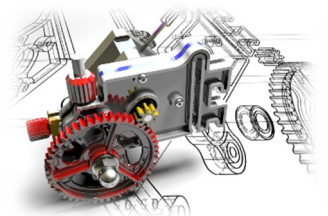
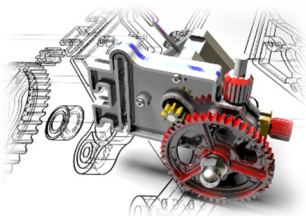


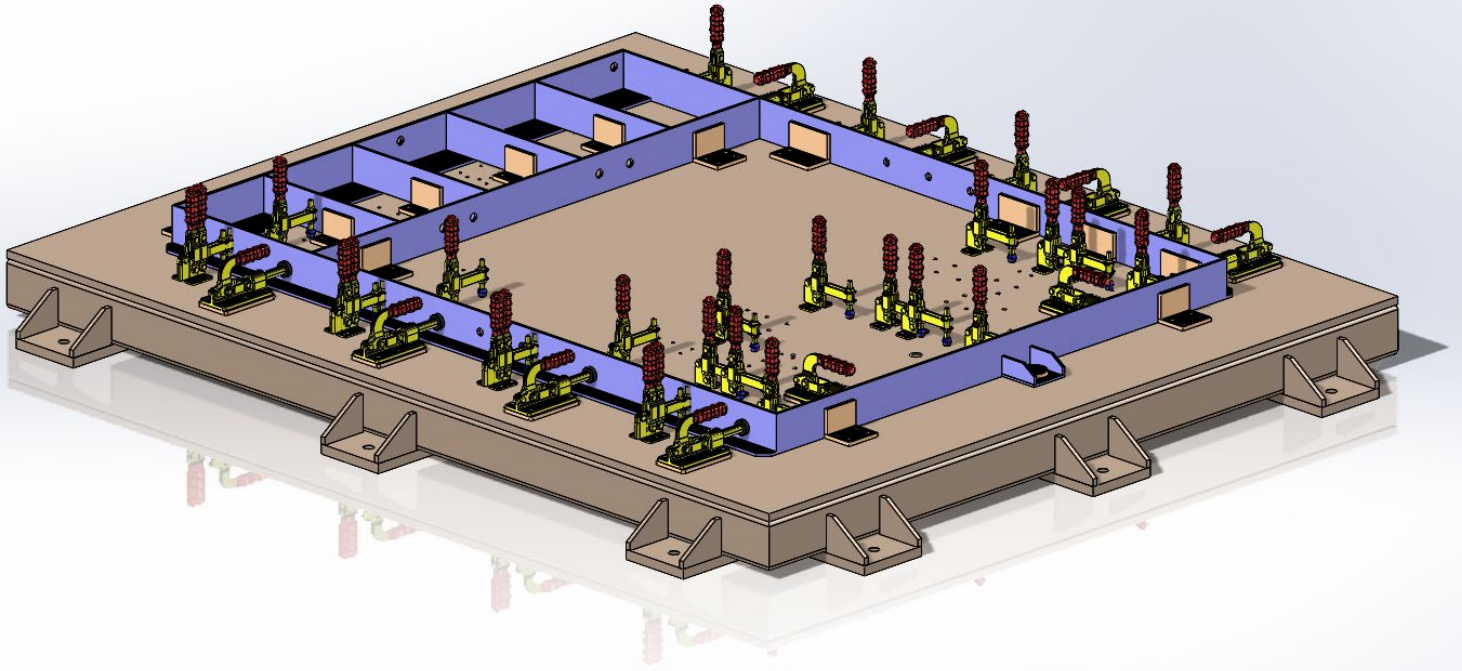
ROBOTICS WELDING FIXTURE DESIGN

In the accompanying ventures, we prepared computerized virtual model and on its basis, manufacturing drawings were made to perform welding operations by robotic arm generally in co-ordinance with client's requirement.

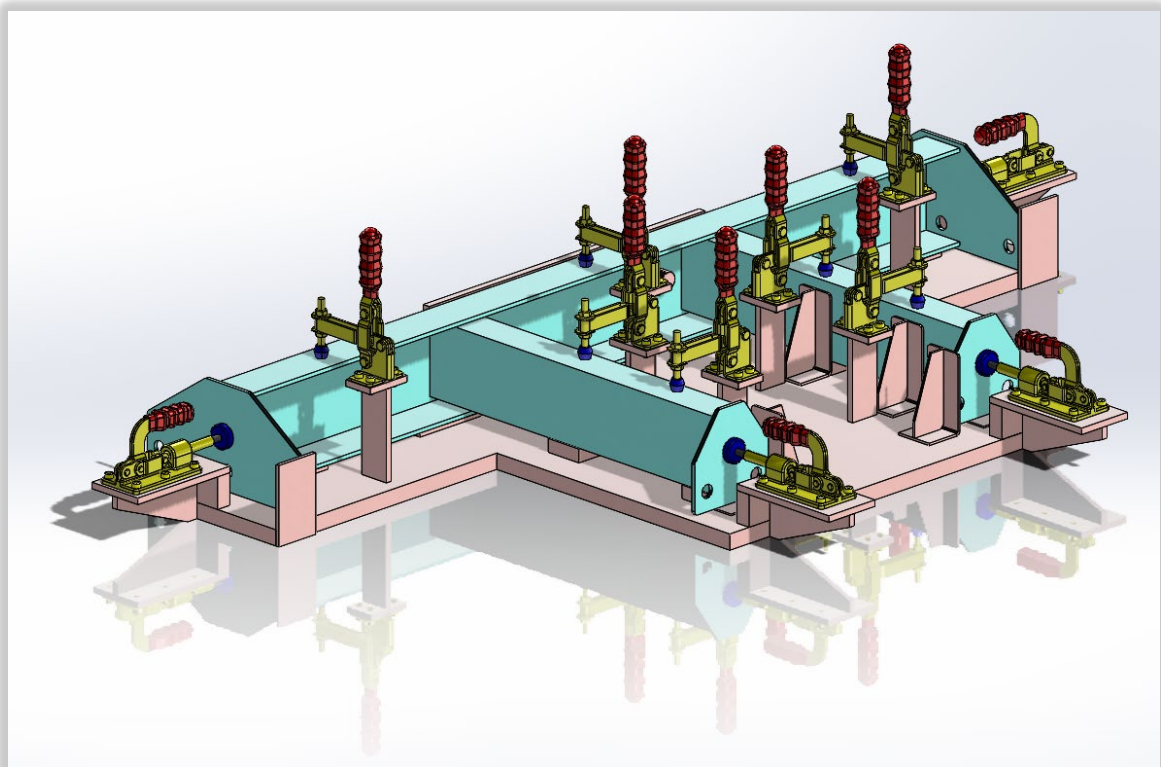


Robotic Arm Welding Fixture For Seam Joint

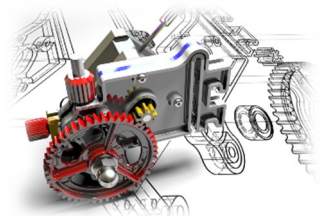
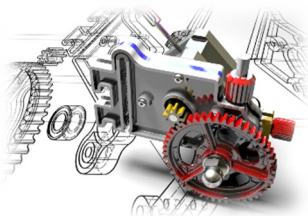




Robotic Arm Welding Fixture For Frame

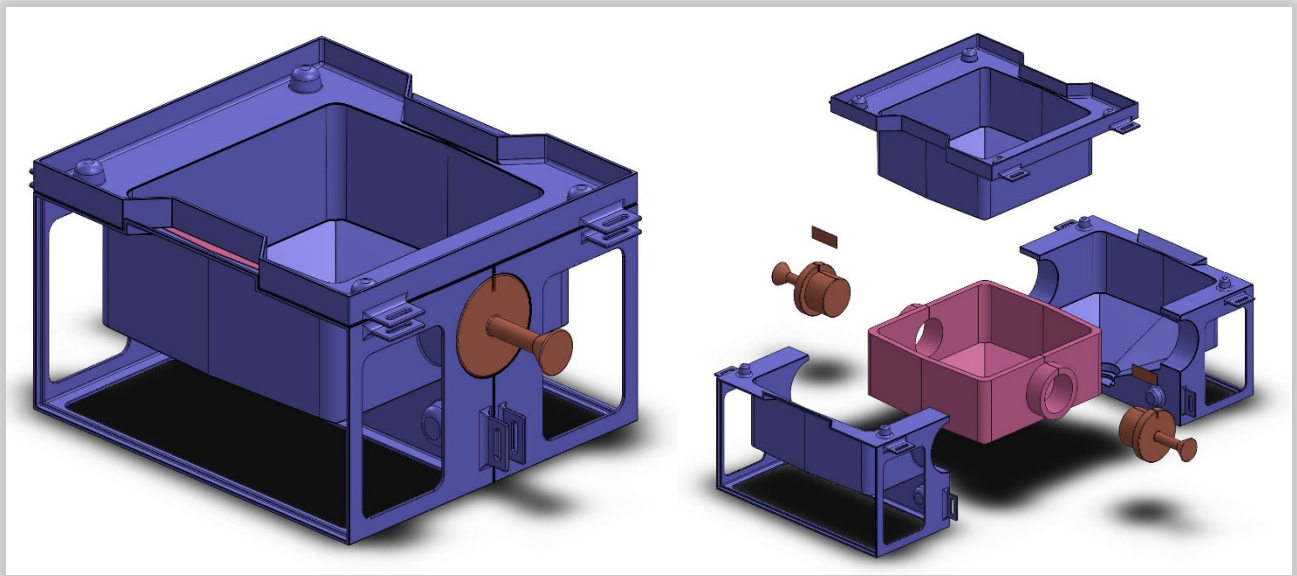


Robotic Arm Welding Fixture For Bracket

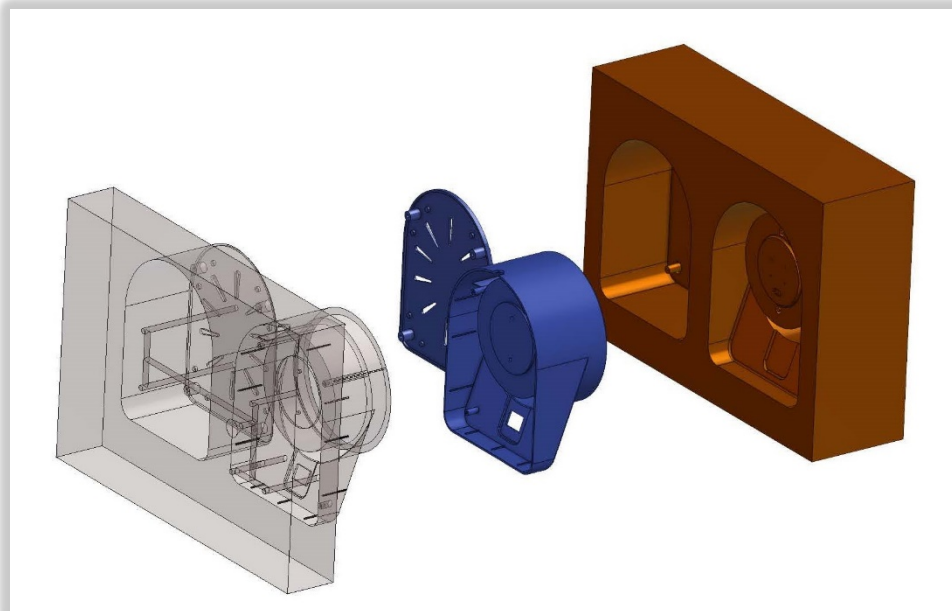


MOULD AND DIE DESIGNING

In the accompanying ventures, we prepared computerized virtual model and on its basis, manufacturing drawings were made of the product to be molded. However, considering product dimensions and material according to client requirement.



Mould Design For Rubber Housing



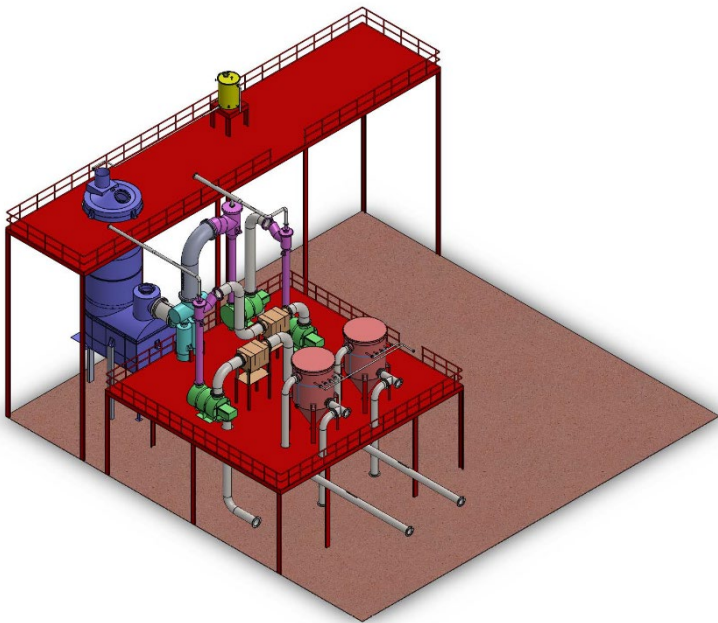
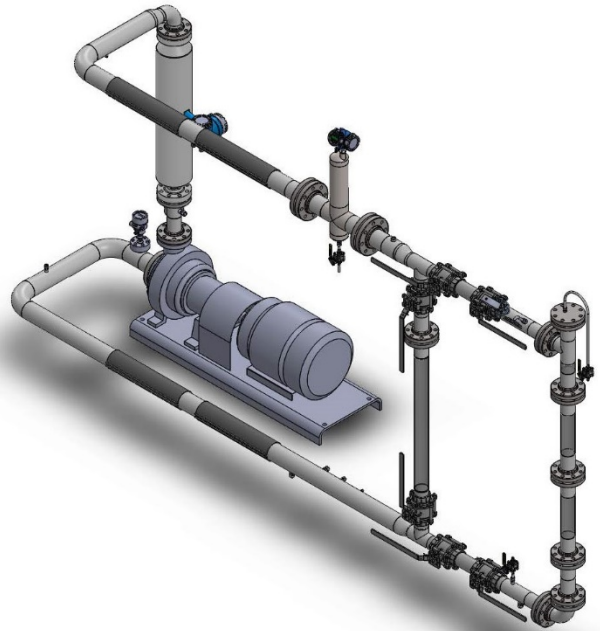
Mould Design For Plastic Product



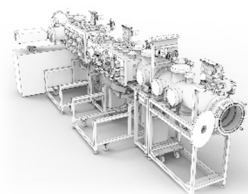
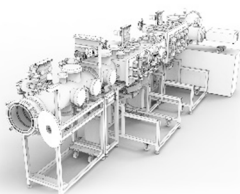
PIPING AND ROUTING DESIGN

In the accompanying ventures, we prepared computerized virtual model and on its basis, manufacturing drawings were made for piping and routing of a single system / entire plant on basis of data provided by the client.

Piping Design For RD System

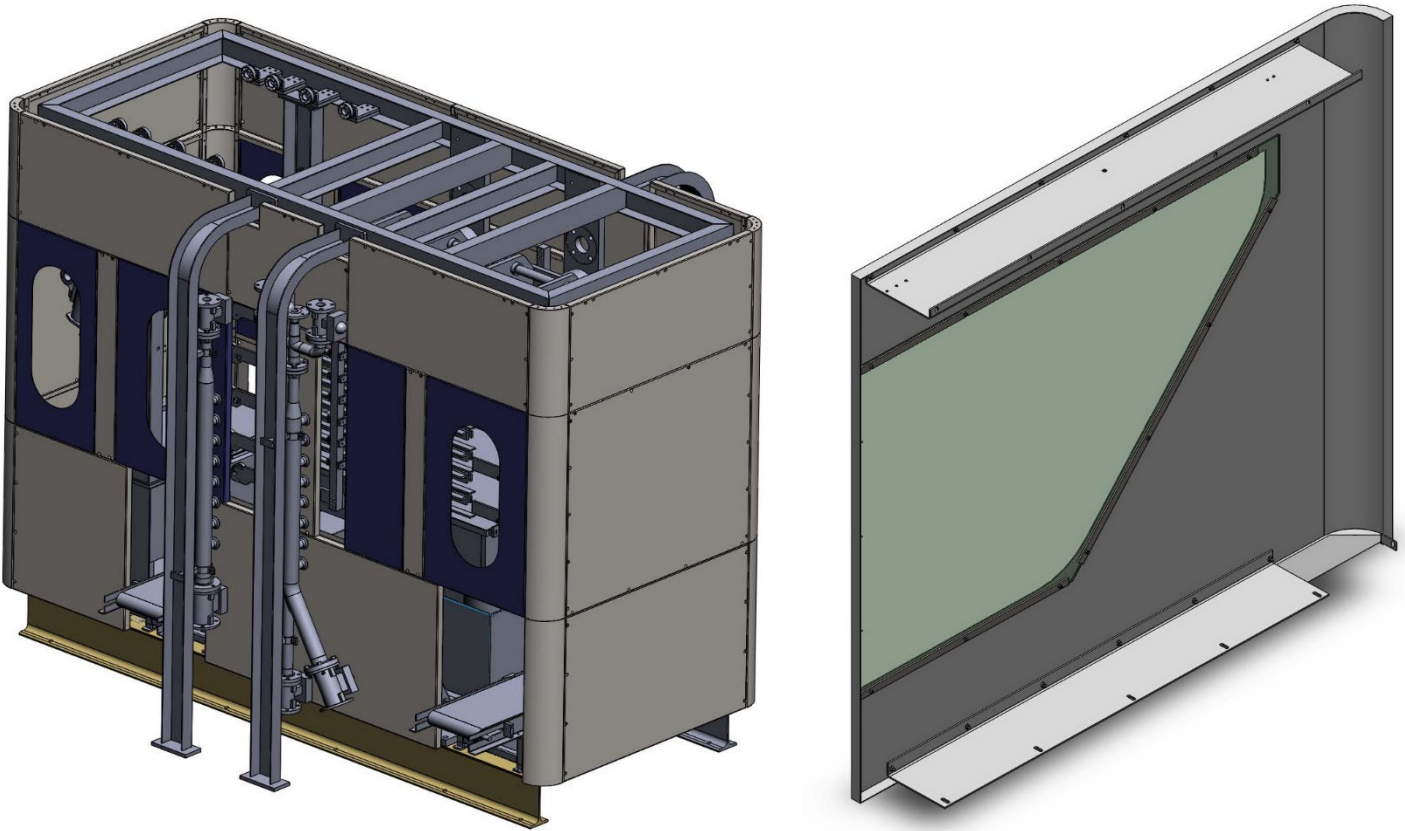


**Piping and Routing Design For
Gasifier Plant**



SHEET METAL DESIGN

In the accompanying ventures, we prepared computerized virtual model and on its basis, manufacturing drawings were made for sheet metal coverings and openings in ordinances with data provided by the client.

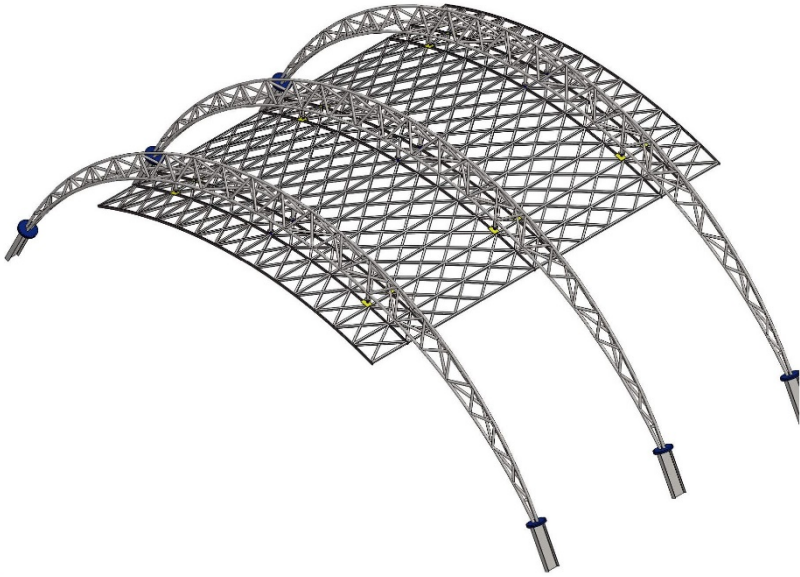


**Vertical Filter Press Outer
Body & Opening Design**

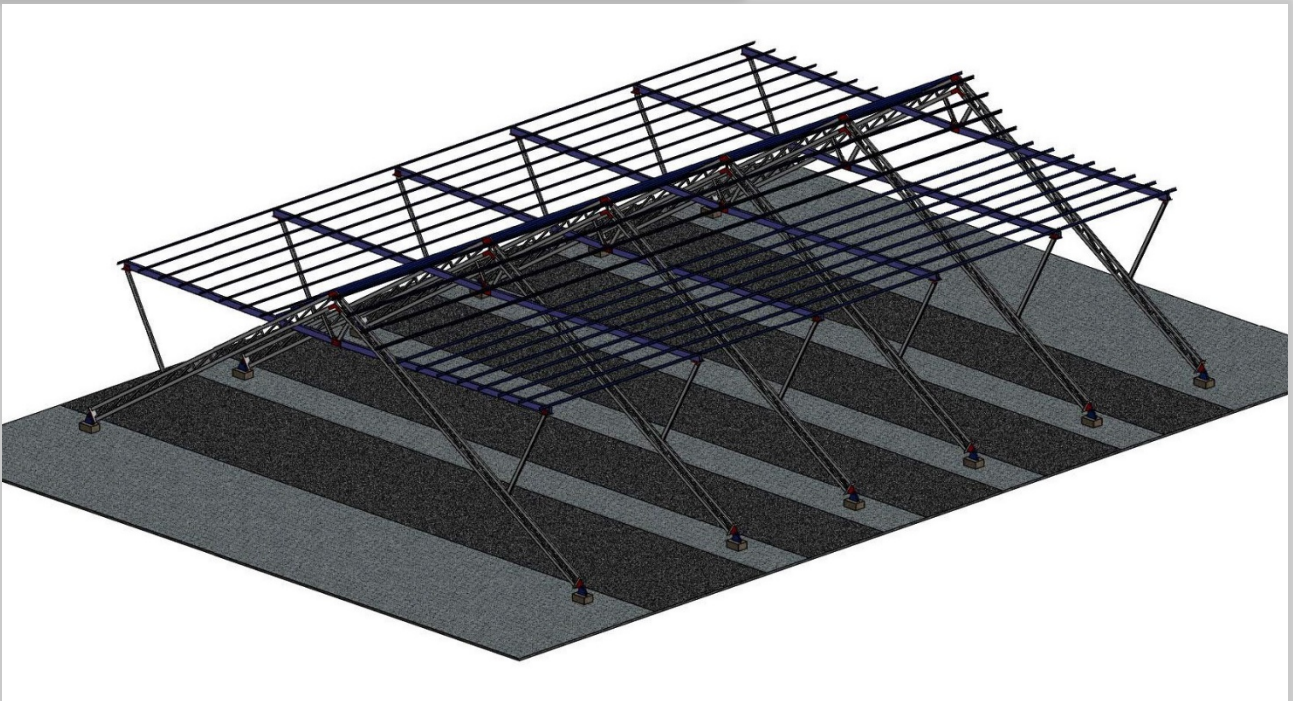


STRUCTURE DESIGN

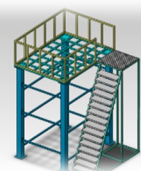
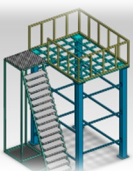
We also provide structure design services including complete manufacturing drawing and analysis of the same. Here are some of the projects accomplished by us.



Arc Dome For Toll Booth

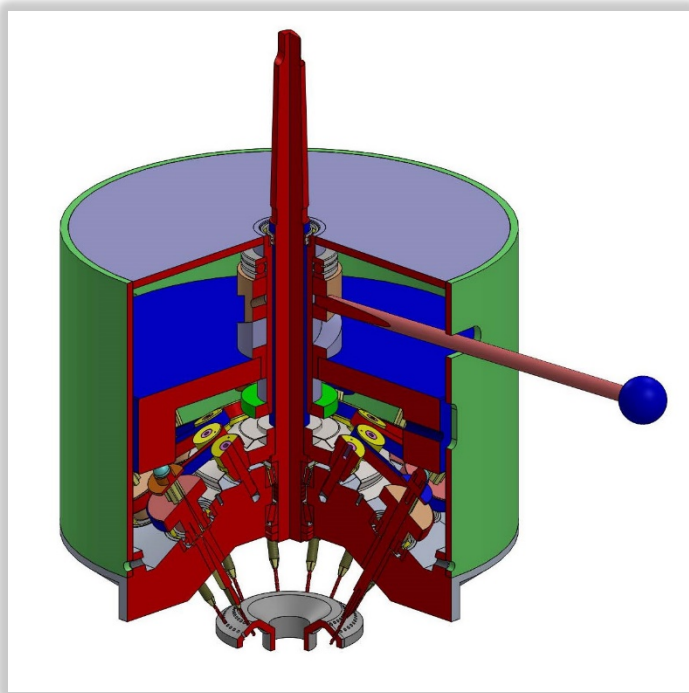
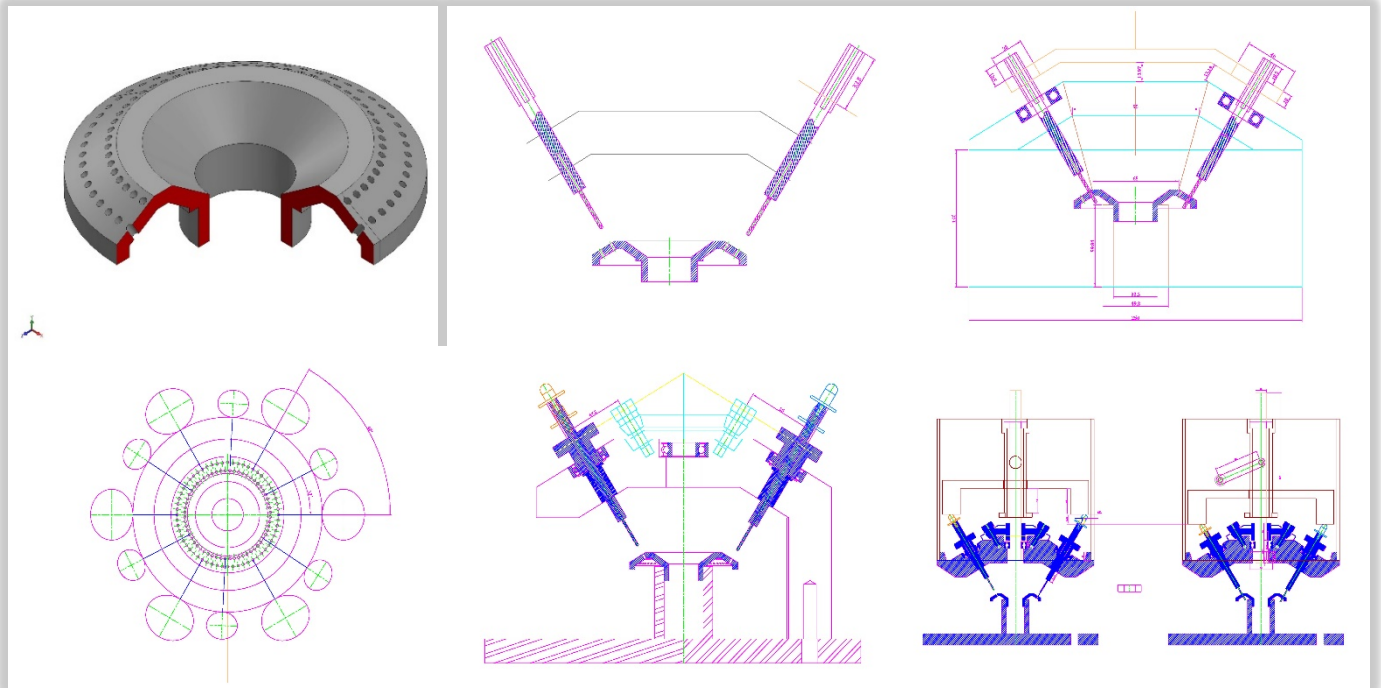


Roofing Structure For Toll Booth

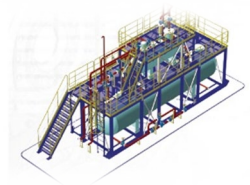
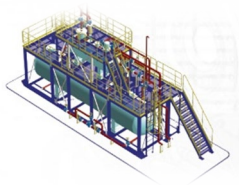


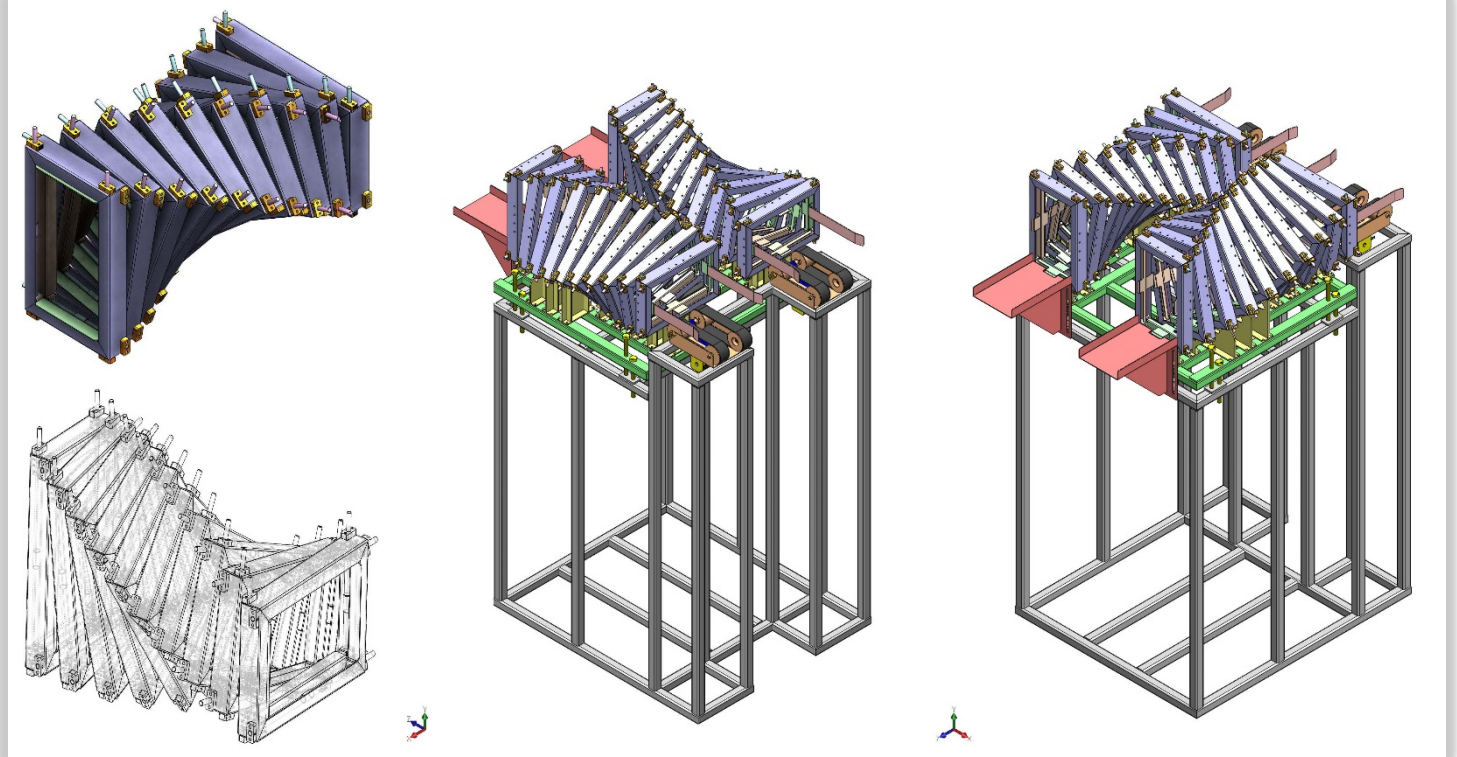
DESIGNING OF SPECIAL PURPOSE MACHINES

We design a lot more. However, here are some absolute machine designs developed by us.

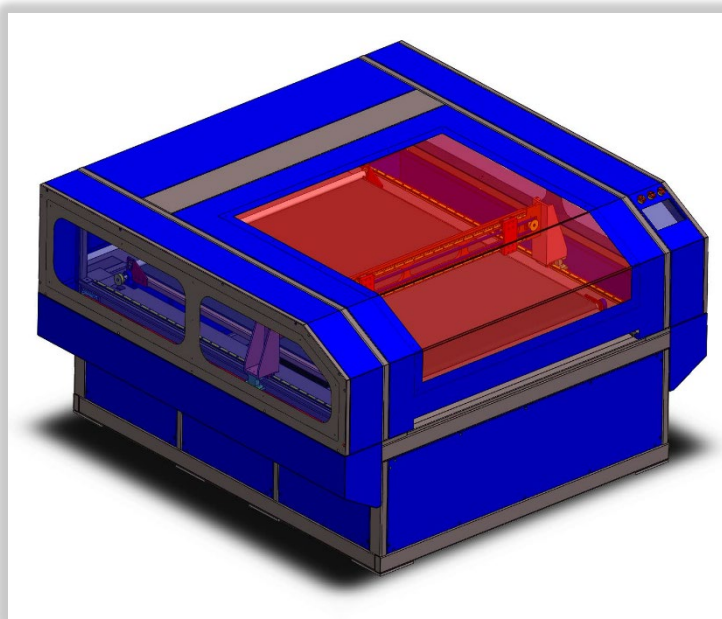


**Multiple Drilling Head For Gas
Burner**

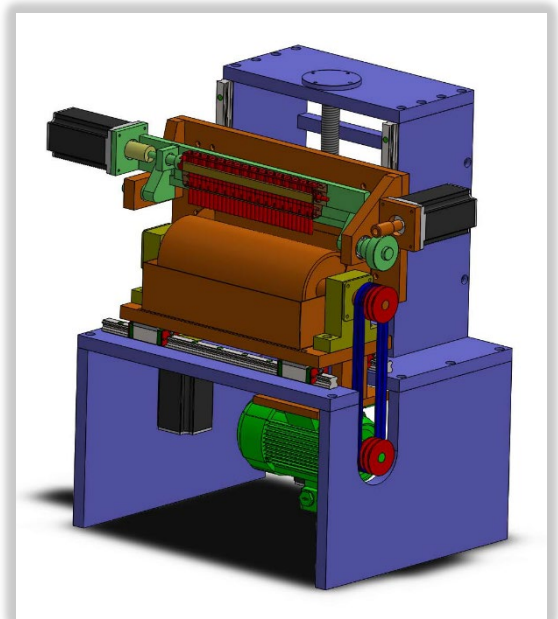




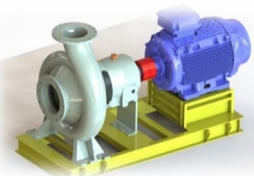
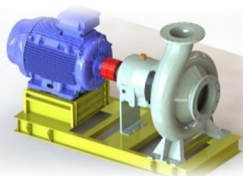
Plastic Beaker 90° Rotating Guide



Laser Cutting Machine For Cloth

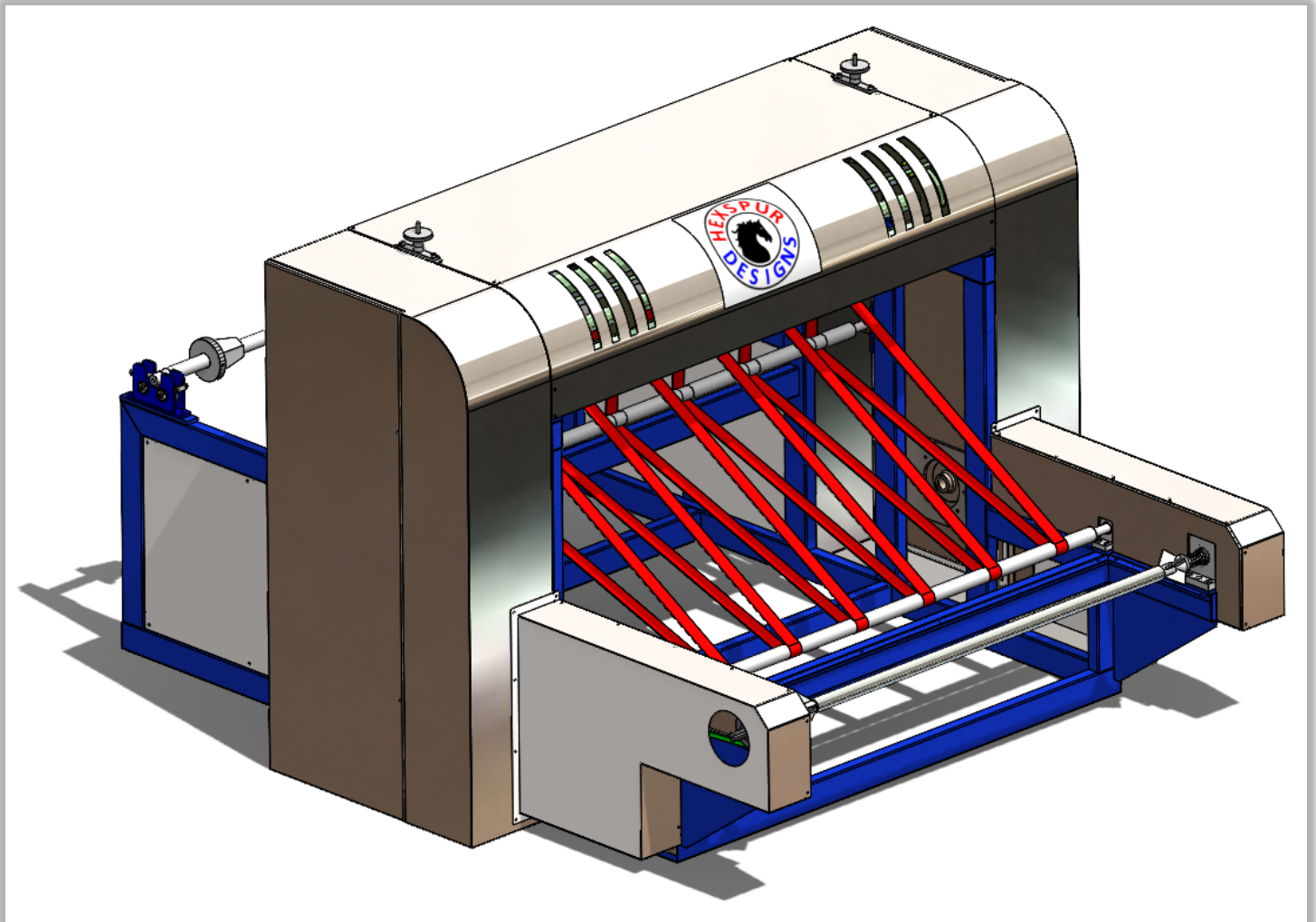


Diamond Polishing Machine



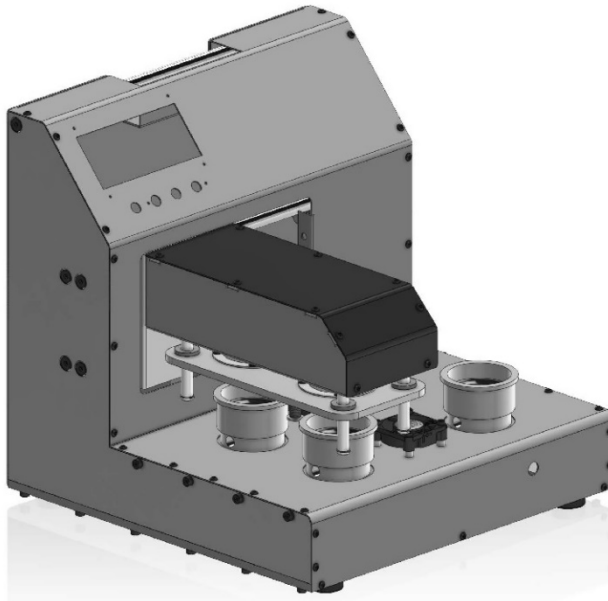
MANUFACTURING OF SPECIAL PURPOSE MACHINES

We completely manufacture these Special Purpose Machines on order. Highest quality and lowest possible cost will be primarily prioritized.

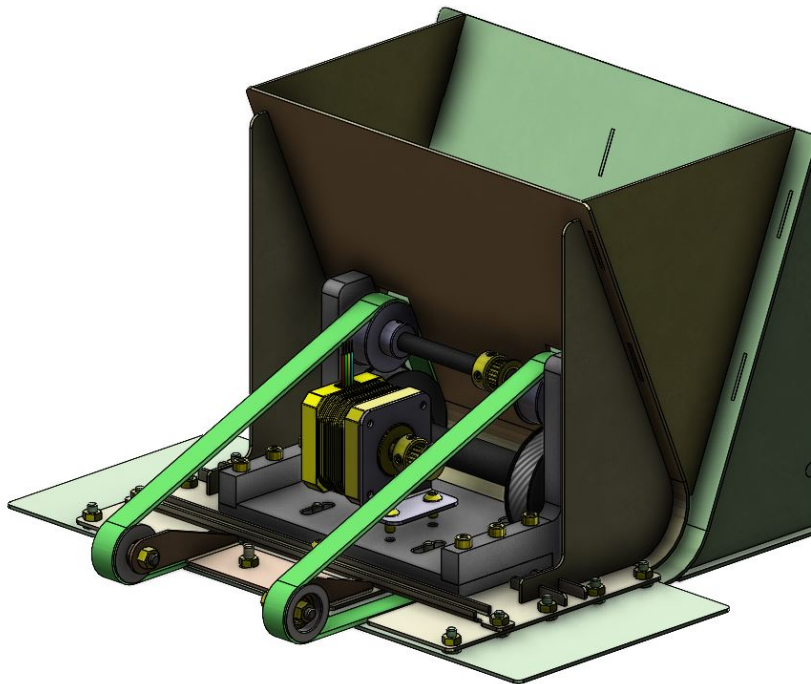


Roll To Sheet Cutting & Roll To Roll Winding Machine





Milk Testing Machine



Hair Feeder For Wig Production Unit

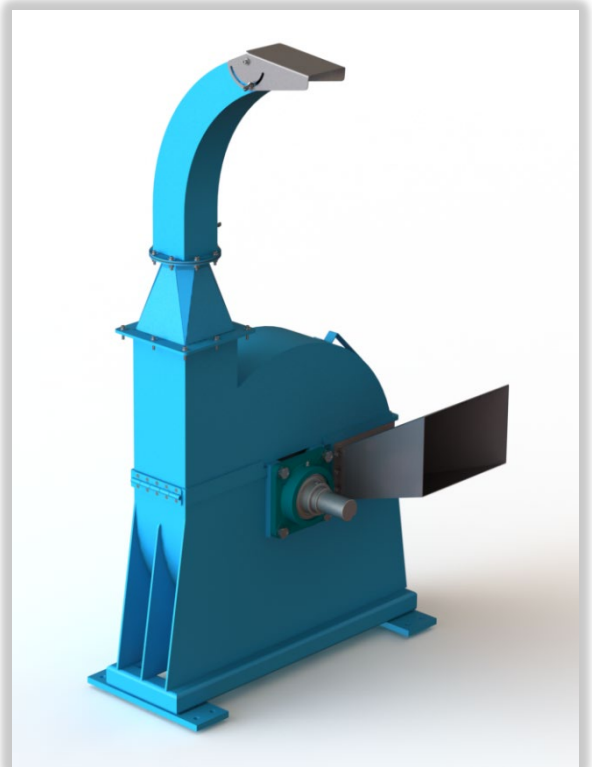




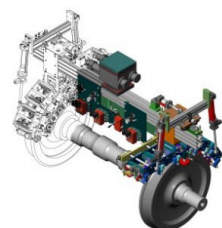
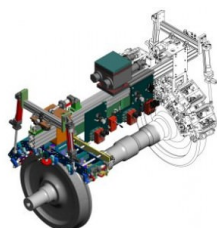
Double Side Rod Bending Machine



Sugarcane Juice Machine

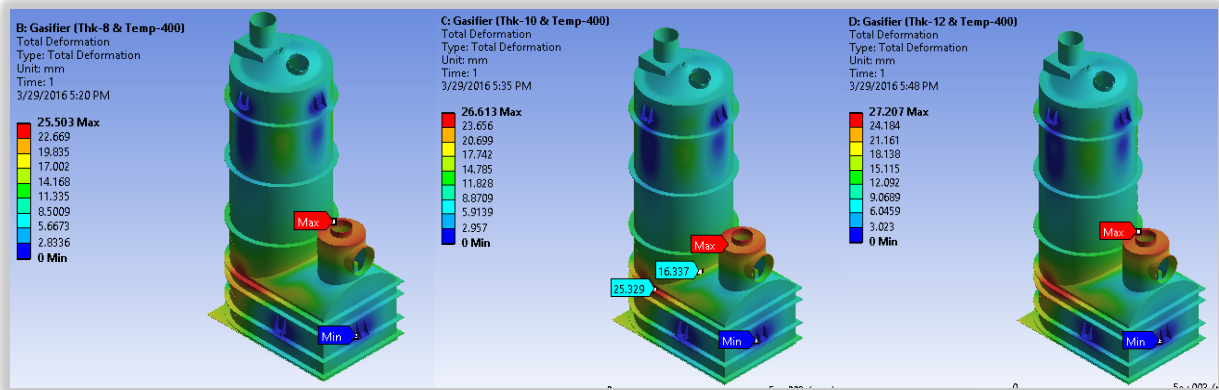


Wood Chipper Machine

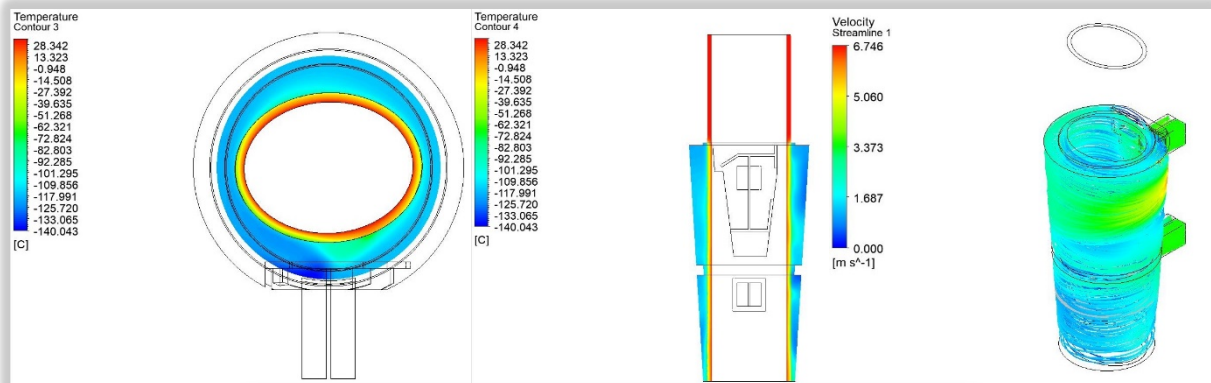


PRODUCT ANALYSIS AND DESIGN VERIFICATION

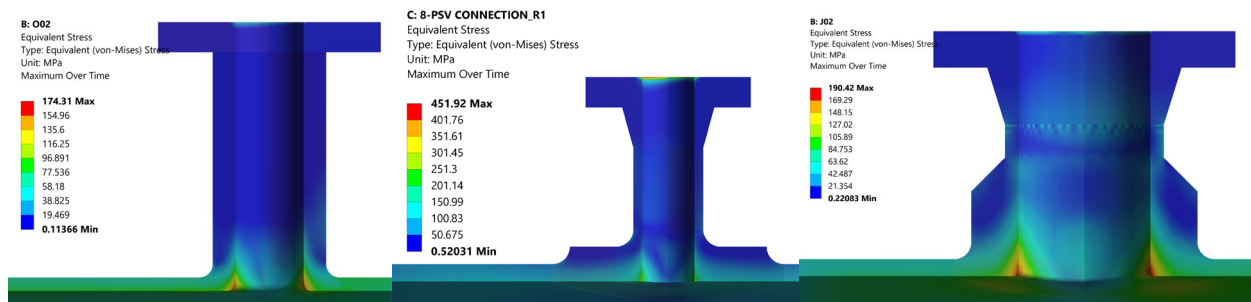
We also provide product analysis and verification services. Here are some of the projects accomplished by us.



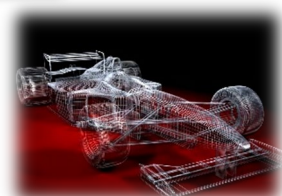
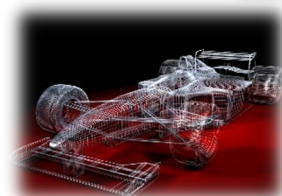
Tank Deformation At Various Wall Thickness



Cryotherapy Chamber Flow & Heat Transfer Simulation



Nozzle Stress Analysis



HEXSPUR DESIGNS

PROVIDING CAD SUPPORT TO YOUR IDEA

OUR CLIENTS ACROSS THE COUNTRY



OUR CLIENTS AROUND THE GLOBE



HEXSPUR DESIGNS

PROVIDING CAD SUPPORT TO YOUR IDEA



CONTACT US

E-mail Us :

info@hexspurdesigns.com,
designs@hexspurdesigns.com,
hexspurdesigns@gmail.com.

Contact Us :

Krunal S. Mistry - (+91) – 9722278107

Visit Our Office At :

**307, 3RD Floor, Ashwamegh Complex, Above Raymond Showroom, Rambagh, Kankaria
Maninagar Road, Ahmedabad – 380008, Gujarat, India.**

Visit Us On :

www.hexspurdesigns.com

